

# Berger Realty

Since 1926



Berger Realty, Inc.  
3160 Asbury Avenue  
Ocean City, NJ 08226  
1-877-237-4371 / 609-399-0076  
info@bergerrealty.com



Nor Easter Between 7th & 8th Sts., Ocean City, NJ, 08226

Price \$25,000.00



### PROPERTY DETAILS

Total Rooms	
Bedrooms	0
Baths Full	0
Baths Half	0
Year Built	
Type	
Block Number	715
Listing #	567141
Taxes	97.00

### COMMENTS

20 Foot Boat slip in a Premier Location! Situated between 7th & 8th Street behind the NorEaster Complex. Slip is in the E Dock and faces south, size is 20 x 8. Amenities on site include restrooms w/showers, water & electric at each slip, shared fish cleaning station and dock lights. Gated access to the property and parking on site. Current monthly condo fee is \$130.00.D...

### PROPERTY FEATURES

### CONTACT



Ask for Marki Lyn Warlow  
Berger Realty Inc  
3160 Asbury Avenue, Ocean City  
Call:  
Email to: mlw@bergerrealty.com

Scan to see Property page.



# Berger Realty

Since 1926



Berger Realty, Inc.  
3160 Asbury Avenue  
Ocean City, NJ 08226  
1-877-237-4371 / 609-399-0076  
info@bergerrealty.com



Nor Easter Between 7th & 8th Sts., Ocean City, NJ, 08226

Price \$25,000.00



### PROPERTY DETAILS

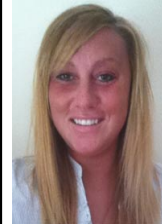
Total Rooms	
Bedrooms	0
Baths Full	0
Baths Half	0
Year Built	
Type	
Block Number	715
Listing #	567141
Taxes	97.00

### COMMENTS

20 Foot Boat slip in a Premier Location! Situated between 7th & 8th Street behind the NorEaster Complex. Slip is in the E Dock and faces south, size is 20 x 8. Amenities on site include restrooms w/showers, water & electric at each slip, shared fish cleaning station and dock lights. Gated access to the property and parking on site. Current monthly condo fee is \$130.00.D...

### PROPERTY FEATURES

### CONTACT



Ask for Marki Lyn Warlow  
Berger Realty Inc  
3160 Asbury Avenue, Ocean City  
Call:  
Email to: mlw@bergerrealty.com

Scan to see Property page.

