

Berger Realty

Since 1926



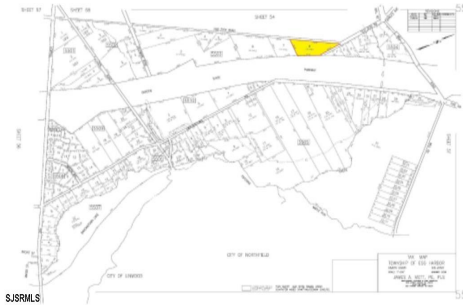
Berger Realty, Inc.
3160 Asbury Avenue
Ocean City, NJ 08226
1-877-237-4371 / 609-399-0076
info@bergerrealty.com



1024 Old Zion, Egg Harbor Township, NJ, 08234

Price \$119,000.00

PROPERTY DETAILS



Total Rooms	
Bedrooms	0
Baths Full	0
Baths Half	0
Year Built	
Type	
Block Number	5503
Listing #	553412
Taxes	2109.00

COMMENTS

Lot with great potential! As per municipal tax records, this property is 2.85 acres and is unimproved and partially wooded. It has 779' of frontage on Old Zion Road with approximately 250' of depth, and 335' along the Garden State Parkway. An initial review of the GIS mapping systems indicates the parcel appears to be comprised of upland soils, subject to a formal...

PROPERTY FEATURES

CONTACT

Berger Realty Inc
3160 Asbury Ave.
Ocean City, NJ 08226
Call: (609) 399-0076
Email to: info@bergerrealty.com
Web: www.bergerrealty.com

Scan to see Property page.



Berger Realty

Since 1926



Berger Realty, Inc.
3160 Asbury Avenue
Ocean City, NJ 08226
1-877-237-4371 / 609-399-0076
info@bergerrealty.com



1024 Old Zion, Egg Harbor Township, NJ, 08234

Price \$119,000.00

PROPERTY DETAILS



Total Rooms	
Bedrooms	0
Baths Full	0
Baths Half	0
Year Built	
Type	
Block Number	5503
Listing #	553412
Taxes	2109.00

COMMENTS

Lot with great potential! As per municipal tax records, this property is 2.85 acres and is unimproved and partially wooded. It has 779' of frontage on Old Zion Road with approximately 250' of depth, and 335' along the Garden State Parkway. An initial review of the GIS mapping systems indicates the parcel appears to be comprised of upland soils, subject to a formal...

PROPERTY FEATURES

CONTACT

Berger Realty Inc
3160 Asbury Ave.
Ocean City, NJ 08226
Call: (609) 399-0076
Email to: info@bergerrealty.com
Web: www.bergerrealty.com

Scan to see Property page.

