

Berger Realty

Since 1926



Berger Realty, Inc.
3160 Asbury Avenue
Ocean City, NJ 08226
1-877-237-4371 / 609-399-0076
info@bergerrealty.com



Wrangleboro, Galloway Township, NJ, 08205

Price \$20,000.00



PROPERTY DETAILS

Total Rooms	0
Bedrooms	0
Baths Full	0
Baths Half	0
Year Built	
Type	
Block Number	953.0
Listing #	549919
Taxes	2973.00

COMMENTS

7.4 acres subject to wetlands delineation and other government approvals. The wetlands map from NJDEP shows the entire site is potentially a wetland. The map is a screening tool and accuracy should be verified by a possible buyer. There is also a possible federally endangered species (a bat) and a threatened species (barred owl) associated with this area. Field inspecti...

PROPERTY FEATURES

CONTACT



Ask for J.K. Hepner, III
Berger Realty Inc
3160 Asbury Avenue, Ocean City
Call: 609-457-9457
Email to: jkh@bergerrealty.com

Scan to see Property page.



Berger Realty

Since 1926

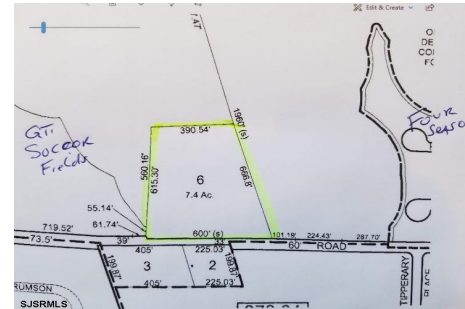


Berger Realty, Inc.
3160 Asbury Avenue
Ocean City, NJ 08226
1-877-237-4371 / 609-399-0076
info@bergerrealty.com



Wrangleboro, Galloway Township, NJ, 08205

Price \$20,000.00



PROPERTY DETAILS

Total Rooms	0
Bedrooms	0
Baths Full	0
Baths Half	0
Year Built	
Type	
Block Number	953.0
Listing #	549919
Taxes	2973.00

COMMENTS

7.4 acres subject to wetlands delineation and other government approvals. The wetlands map from NJDEP shows the entire site is potentially a wetland. The map is a screening tool and accuracy should be verified by a possible buyer. There is also a possible federally endangered species (a bat) and a threatened species (barred owl) associated with this area. Field inspecti...

PROPERTY FEATURES

CONTACT



Ask for J.K. Hepner, III
Berger Realty Inc
3160 Asbury Avenue, Ocean City
Call: 609-457-9457
Email to: jkh@bergerrealty.com

Scan to see Property page.

