

# Berger Realty

Since 1926



Berger Realty, Inc.  
3160 Asbury Avenue  
Ocean City, NJ 08226  
1-877-237-4371 / 609-399-0076  
info@bergerrealty.com



2059 Ocean Heights, Egg Harbor Township, NJ, 08234

Price \$305,000.00

### PROPERTY DETAILS

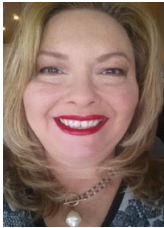
Total Rooms	
Bedrooms	0
Baths Full	0
Baths Half	0
Year Built	
Type	
Block Number	5205
Listing #	546462
Taxes	9018.00

### COMMENTS

Great price for a Large piece of land on Ocean Heights Ave. Approvals were previously granted for retail/restaurant/office space on one of the busiest roads in Egg Harbor Township! Just 1/2 mile from the Ocean Heights/English Creek intersection, this opportunity includes plenty of room for improvements and flexibility in use. Much of the legwork has already been done - pro...

### PROPERTY FEATURES

### CONTACT



Ask for Theresa Maina  
Berger Realty Inc  
3160 Asbury Avenue, Ocean City  
Call: 609-703-7725  
Email to: tam@bergerrealty.com

Scan to see Property page.



# Berger Realty

Since 1926



Berger Realty, Inc.  
3160 Asbury Avenue  
Ocean City, NJ 08226  
1-877-237-4371 / 609-399-0076  
info@bergerrealty.com



2059 Ocean Heights, Egg Harbor Township, NJ, 08234

Price \$305,000.00

### PROPERTY DETAILS

Total Rooms	
Bedrooms	0
Baths Full	0
Baths Half	0
Year Built	
Type	
Block Number	5205
Listing #	546462
Taxes	9018.00

### COMMENTS

Great price for a Large piece of land on Ocean Heights Ave. Approvals were previously granted for retail/restaurant/office space on one of the busiest roads in Egg Harbor Township! Just 1/2 mile from the Ocean Heights/English Creek intersection, this opportunity includes plenty of room for improvements and flexibility in use. Much of the legwork has already been done - pro...

### PROPERTY FEATURES

### CONTACT



Ask for Theresa Maina  
Berger Realty Inc  
3160 Asbury Avenue, Ocean City  
Call: 609-703-7725  
Email to: tam@bergerrealty.com

Scan to see Property page.

