

Berger Realty

Since 1926

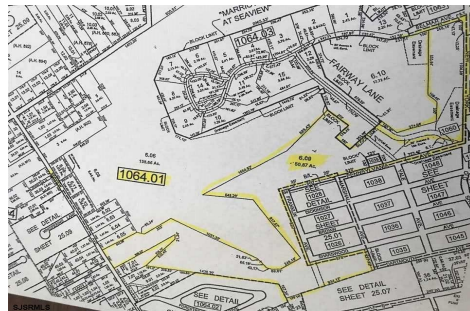


Berger Realty, Inc.
3160 Asbury Avenue
Ocean City, NJ 08226
1-877-237-4371 / 609-399-0076
info@bergerrealty.com



NEW YORK ROAD, Galloway Township, NJ, 08205

Price \$595,000.00



PROPERTY DETAILS

| | |
|--------------|----------|
| Total Rooms | 0 |
| Bedrooms | 0 |
| Baths Full | 0 |
| Baths Half | 0 |
| Year Built | |
| Type | |
| Block Number | 1064.01 |
| Listing # | 540045 |
| Taxes | 30495.00 |

COMMENTS

DISCOVER THIS 50 + ACRE PROPERTY IN THE HEART OF GALLOWAY TOWNSHIP SURROUNDED BY SEAVIEW C.C. COMMERCIAL SECTION OF LOT WOULD BE IDEAL FOR A STRIP CENTER - W/APPROX. 1150+' OF FRONTAGE ON RT. 9. + SUB-DIVIDABLE LAND FOR RESIDENTIAL OPPORTUNITIES WITH SOME COUNTRY CLUB LOTS. THE LAND LOOPS ALL THE WAY FROM RT. 9 TO SEAVIEW AVE. & THEN SOME. SO MANY POSSIBILITIES. CLOSE T...

PROPERTY FEATURES

CONTACT



Ask for Mary Kuchka
Berger Realty Inc
3160 Asbury Avenue, Ocean City
Call: 609-576-2790
Email to: mk@bergerrealty.com

Scan to see Property page.



Berger Realty

Since 1926

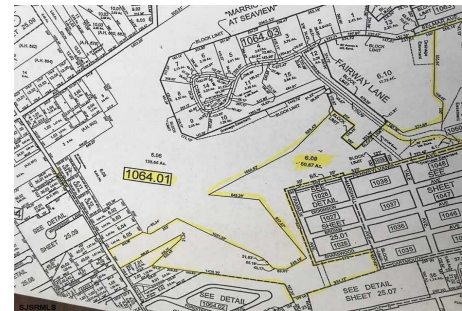


Berger Realty, Inc.
3160 Asbury Avenue
Ocean City, NJ 08226
1-877-237-4371 / 609-399-0076
info@bergerrealty.com



NEW YORK ROAD, Galloway Township, NJ, 08205

Price \$595,000.00



PROPERTY DETAILS

| | |
|--------------|----------|
| Total Rooms | 0 |
| Bedrooms | 0 |
| Baths Full | 0 |
| Baths Half | 0 |
| Year Built | |
| Type | |
| Block Number | 1064.01 |
| Listing # | 540045 |
| Taxes | 30495.00 |

COMMENTS

DISCOVER THIS 50 + ACRE PROPERTY IN THE HEART OF GALLOWAY TOWNSHIP SURROUNDED BY SEAVIEW C.C. COMMERCIAL SECTION OF LOT WOULD BE IDEAL FOR A STRIP CENTER - W/APPROX. 1150+' OF FRONTAGE ON RT. 9. + SUB-DIVIDABLE LAND FOR RESIDENTIAL OPPORTUNITIES WITH SOME COUNTRY CLUB LOTS. THE LAND LOOPS ALL THE WAY FROM RT. 9 TO SEAVIEW AVE. & THEN SOME. SO MANY POSSIBILITIES. CLOSE T...

PROPERTY FEATURES

CONTACT



Ask for Mary Kuchka
Berger Realty Inc
3160 Asbury Avenue, Ocean City
Call: 609-576-2790
Email to: mk@bergerrealty.com

Scan to see Property page.

