



Berger Realty, Inc.
3160 Asbury Avenue
Ocean City, NJ 08226
1-877-237-4371 / 609-399-0076
info@bergerrealty.com



508 13th St, Dorothy, NJ, 08317

Price \$25,000.00

PHOTO NOT AVAILABLE



PROPERTY DETAILS

Total Rooms	
Bedrooms	0
Baths Full	0
Baths Half	0
Year Built	
Type	
Block Number	56
Listing #	523862
Taxes	126.00

COMMENTS

DENSITY TRANSFER AND PINELANDS CREDIT! NON BUILDABLE! SELLER HAS OTHER LOTS INC 507/508 13TH ST AND 14TH ST...

PROPERTY FEATURES

CONTACT



Ask for Sara Varani
Berger Realty Inc
3160 Asbury Avenue, Ocean City
Call:
Email to: sev@bergerrealty.com

Scan to see Property page.



Berger Realty, Inc.
3160 Asbury Avenue
Ocean City, NJ 08226
1-877-237-4371 / 609-399-0076
info@bergerrealty.com



508 13th St, Dorothy, NJ, 08317

Price \$25,000.00

PHOTO NOT AVAILABLE



PROPERTY DETAILS

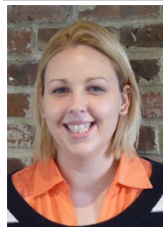
Total Rooms	
Bedrooms	0
Baths Full	0
Baths Half	0
Year Built	
Type	
Block Number	56
Listing #	523862
Taxes	126.00

COMMENTS

DENSITY TRANSFER AND PINELANDS CREDIT! NON BUILDABLE! SELLER HAS OTHER LOTS INC 507/508 13TH ST AND 14TH ST...

PROPERTY FEATURES

CONTACT



Ask for Sara Varani
Berger Realty Inc
3160 Asbury Avenue, Ocean City
Call:
Email to: sev@bergerrealty.com

Scan to see Property page.

