

# Berger Realty

Since 1926



Berger Realty, Inc.  
3160 Asbury Avenue  
Ocean City, NJ 08226  
1-877-237-4371 / 609-399-0076  
info@bergerrealty.com



1492 CHEWS LANDING ROAD, Laurel Springs, NJ, 08021

Price \$299,900.00

### PROPERTY DETAILS

Total Rooms	
Bedrooms	0
Baths Full	0
Baths Half	0
Year Built	
Type	
Block Number	8201
Listing #	431584
Taxes	15051.00

### COMMENTS

SHOPS AT LAUREL SPRINGS. LAND AND PRIOR APPROVALS FOR 14,000 SQ FT RETAIL CENTER LOCATED IN THE HEART OF GLOUCESTER TOWNSHIP, CAMDEN COUNTY'S SECOND LARGEST MUNICIPALITY. ALL UTILITIES ARE AT THE SITE....

### PROPERTY FEATURES

### CONTACT



Ask for Sara Varani  
Berger Realty Inc  
3160 Asbury Avenue, Ocean City  
Call:  
Email to: sev@bergerrealty.com

Scan to see Property page.



# Berger Realty

Since 1926



Berger Realty, Inc.  
3160 Asbury Avenue  
Ocean City, NJ 08226  
1-877-237-4371 / 609-399-0076  
info@bergerrealty.com



1492 CHEWS LANDING ROAD, Laurel Springs, NJ, 08021

Price \$299,900.00

### PROPERTY DETAILS

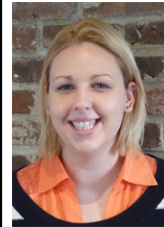
Total Rooms	
Bedrooms	0
Baths Full	0
Baths Half	0
Year Built	
Type	
Block Number	8201
Listing #	431584
Taxes	15051.00

### COMMENTS

SHOPS AT LAUREL SPRINGS. LAND AND PRIOR APPROVALS FOR 14,000 SQ FT RETAIL CENTER LOCATED IN THE HEART OF GLOUCESTER TOWNSHIP, CAMDEN COUNTY'S SECOND LARGEST MUNICIPALITY. ALL UTILITIES ARE AT THE SITE....

### PROPERTY FEATURES

### CONTACT



Ask for Sara Varani  
Berger Realty Inc  
3160 Asbury Avenue, Ocean City  
Call:  
Email to: sev@bergerrealty.com

Scan to see Property page.

