

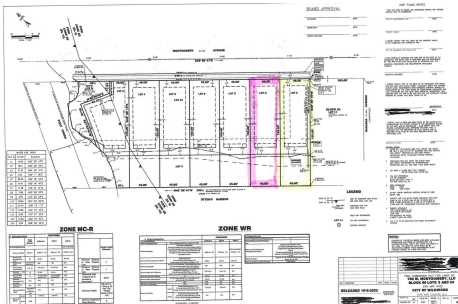


Berger Realty, Inc.  
3160 Asbury Avenue  
Ocean City, NJ 08226  
1-877-237-4371 / 609-399-0076  
info@bergerrealty.com



780 Montgomery, LOT B, Wildwood, NJ, 08260

Price \$1,199,000.00



#### PROPERTY DETAILS

Total Rooms	
Bedrooms	0
Baths Full	0
Baths Half	0
Year Built	
Type	Vacant Lot
Block Number	88
Listing #	253485
Taxes	2060.00

#### COMMENTS

**WATERFRONT ESTATE LOTS ON W. MONTGOMERY • WILDWOOD, NJ** A Limited Offering on the Bayside Presenting two exceptional waterfront estate parcels on one of Wildwood's most sought-after stretches. These 45' x 155' lots extend approximately 40 feet over open water, offering dramatic views and a rare opportunity to build with scale, privacy, and architectural distinctio...

#### PROPERTY FEATURES

#### CONTACT

Berger Realty Inc  
3160 Asbury Ave.  
Ocean City, NJ 08226  
Call: (609) 399-0076  
Email to: info@bergerrealty.com  
Web: www.bergerrealty.com

Scan to see Property page.

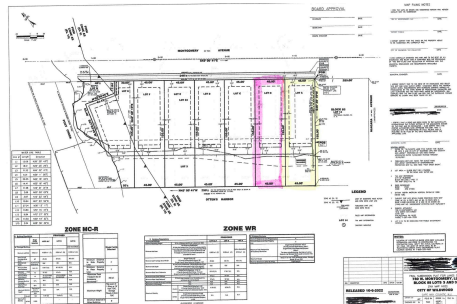


Berger Realty, Inc.  
3160 Asbury Avenue  
Ocean City, NJ 08226  
1-877-237-4371 / 609-399-0076  
info@bergerrealty.com



780 Montgomery, LOT B, Wildwood, NJ, 08260

Price \$1,199,000.00



#### PROPERTY DETAILS

Total Rooms	
Bedrooms	0
Baths Full	0
Baths Half	0
Year Built	
Type	Vacant Lot
Block Number	88
Listing #	253485
Taxes	2060.00

#### COMMENTS

**WATERFRONT ESTATE LOTS ON W. MONTGOMERY • WILDWOOD, NJ** A Limited Offering on the Bayside Presenting two exceptional waterfront estate parcels on one of Wildwood's most sought-after stretches. These 45' x 155' lots extend approximately 40 feet over open water, offering dramatic views and a rare opportunity to build with scale, privacy, and architectural distinctio...

#### PROPERTY FEATURES

#### CONTACT

Berger Realty Inc  
3160 Asbury Ave.  
Ocean City, NJ 08226  
Call: (609) 399-0076  
Email to: info@bergerrealty.com  
Web: www.bergerrealty.com

Scan to see Property page.

