

Berger Realty

Since 1926



Berger Realty, Inc.
3160 Asbury Avenue
Ocean City, NJ 08226
1-877-237-4371 / 609-399-0076
info@bergerrealty.com

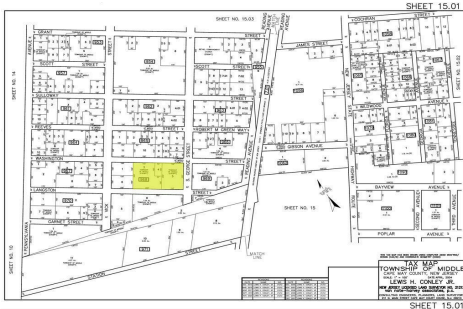


Langston, Whitesboro, NJ, 08252

Price \$100,000.00

PROPERTY DETAILS

Total Rooms	0
Bedrooms	0
Baths Full	0
Baths Half	0
Year Built	
Type	Vacant Lot
Block Number	968
Listing #	253418
Taxes	384.00



COMMENTS

Prime opportunity to own 1.6 acres of serene, wooded land in one of Middle Township's most promising residential areas. This unique property is made up of three separate lots, giving you outstanding flexibility. Whether you're a builder looking for your next project, an investor seeking valuable land in a growth market, or a buyer dreaming of creating a private retreat....

PROPERTY FEATURES

CONTACT



Ask for Patricia (Trish) Spengler
Berger Realty Inc
3160 Asbury Avenue, Ocean City
Call: 609-425-9254
Email to: pjs@bergerrealty.com

Scan to see Property page.



Berger Realty

Since 1926



Berger Realty, Inc.
3160 Asbury Avenue
Ocean City, NJ 08226
1-877-237-4371 / 609-399-0076
info@bergerrealty.com

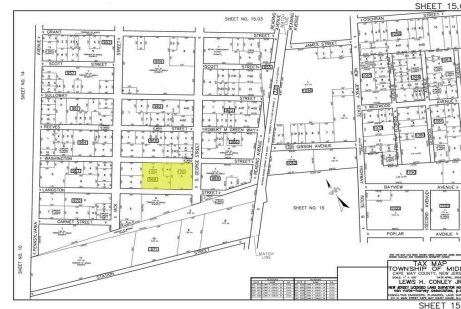


Langston, Whitesboro, NJ, 08252

Price \$100,000.00

PROPERTY DETAILS

Total Rooms	0
Bedrooms	0
Baths Full	0
Baths Half	0
Year Built	
Type	Vacant Lot
Block Number	968
Listing #	253418
Taxes	384.00



COMMENTS

Prime opportunity to own 1.6 acres of serene, wooded land in one of Middle Township's most promising residential areas. This unique property is made up of three separate lots, giving you outstanding flexibility. Whether you're a builder looking for your next project, an investor seeking valuable land in a growth market, or a buyer dreaming of creating a private retreat....

PROPERTY FEATURES

CONTACT



Ask for Patricia (Trish) Spengler
Berger Realty Inc
3160 Asbury Avenue, Ocean City
Call: 609-425-9254
Email to: pjs@bergerrealty.com

Scan to see Property page.

