



Berger Realty, Inc.
3160 Asbury Avenue
Ocean City, NJ 08226
1-877-237-4371 / 609-399-0076
info@bergerrealty.com



290 Route 47 South, Cape May Court House, NJ, 08210

Price \$1,349,000.00

PROPERTY DETAILS

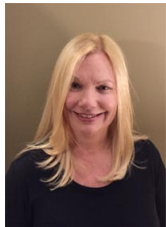
Total Rooms	
Bedrooms	0
Baths Full	0
Baths Half	0
Year Built	
Type	Vacant Lot
Block Number	472
Listing #	253399
Taxes	6033.00

COMMENTS

PRELIMINARY PLANS FOR A 6 LOT SUBDIVISION - EACH LOT IS A MINIMUM 3.5 ACRES.
Extremely Large parcel of land in Cape May County with a significant portion of upland to use. Let your vision be your guide. Currently zoned Residential Business. drawn property lines are approximate....

PROPERTY FEATURES

CONTACT



Ask for Dawn Warren
Berger Realty Inc
3160 Asbury Avenue, Ocean City
Call: 609-432-4966
Email to: dew@bergerrealty.com

Scan to see Property page.



Berger Realty, Inc.
3160 Asbury Avenue
Ocean City, NJ 08226
1-877-237-4371 / 609-399-0076
info@bergerrealty.com



290 Route 47 South, Cape May Court House, NJ, 08210

Price \$1,349,000.00

PROPERTY DETAILS

Total Rooms	
Bedrooms	0
Baths Full	0
Baths Half	0
Year Built	
Type	Vacant Lot
Block Number	472
Listing #	253399
Taxes	6033.00

COMMENTS

PRELIMINARY PLANS FOR A 6 LOT SUBDIVISION - EACH LOT IS A MINIMUM 3.5 ACRES.
Extremely Large parcel of land in Cape May County with a significant portion of upland to use. Let your vision be your guide. Currently zoned Residential Business. drawn property lines are approximate....

PROPERTY FEATURES

CONTACT



Ask for Dawn Warren
Berger Realty Inc
3160 Asbury Avenue, Ocean City
Call: 609-432-4966
Email to: dew@bergerrealty.com

Scan to see Property page.

