

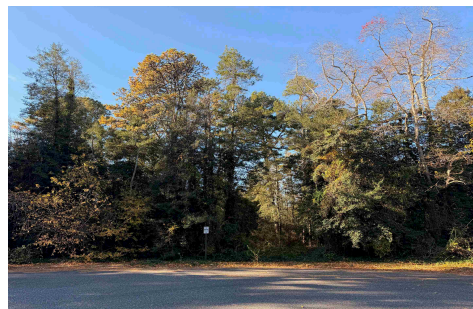


Berger Realty, Inc.
3160 Asbury Avenue
Ocean City, NJ 08226
1-877-237-4371 / 609-399-0076
info@bergerrealty.com



24 Timber, Marmora, NJ, 08223

Price \$299,000.00



PROPERTY DETAILS

| | |
|--------------|------------------------|
| Total Rooms | 0 |
| Bedrooms | 0 |
| Baths Full | 0 |
| Baths Half | 0 |
| Year Built | |
| Type | Residential Vacant Lot |
| Block Number | 597 |
| Listing # | 253352 |
| Taxes | 3252.00 |

COMMENTS

This is a rare opportunity to build your dream home on a large property spanning over 2.5 acres located on a cul-de-sac in desirable Marmora. Located just minutes from Parkway entrance, Beaches, Boardwalk, shopping and more! Lot size 2.81 acres....

PROPERTY FEATURES

CONTACT



Ask for Dawn Warren
Berger Realty Inc
3160 Asbury Avenue, Ocean City
Call: 609-432-4966
Email to: dew@bergerrealty.com

Scan to see Property page.

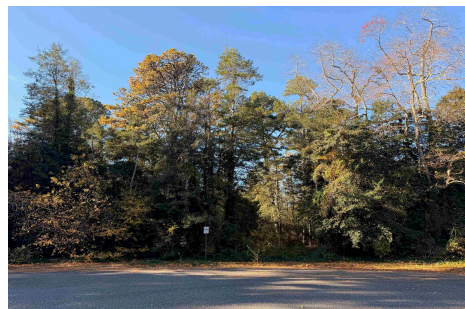


Berger Realty, Inc.
3160 Asbury Avenue
Ocean City, NJ 08226
1-877-237-4371 / 609-399-0076
info@bergerrealty.com



24 Timber, Marmora, NJ, 08223

Price \$299,000.00



PROPERTY DETAILS

| | |
|--------------|------------------------|
| Total Rooms | 0 |
| Bedrooms | 0 |
| Baths Full | 0 |
| Baths Half | 0 |
| Year Built | |
| Type | Residential Vacant Lot |
| Block Number | 597 |
| Listing # | 253352 |
| Taxes | 3252.00 |

COMMENTS

This is a rare opportunity to build your dream home on a large property spanning over 2.5 acres located on a cul-de-sac in desirable Marmora. Located just minutes from Parkway entrance, Beaches, Boardwalk, shopping and more! Lot size 2.81 acres....

PROPERTY FEATURES

CONTACT



Ask for Dawn Warren
Berger Realty Inc
3160 Asbury Avenue, Ocean City
Call: 609-432-4966
Email to: dew@bergerrealty.com

Scan to see Property page.

