

Berger Realty

Since 1926



Berger Realty, Inc.
3160 Asbury Avenue
Ocean City, NJ 08226
1-877-237-4371 / 609-399-0076
info@bergerrealty.com



3800 Park, Wildwood, NJ, 08260

Price \$1,005,000.00

VACANT LAND

PROPERTY DETAILS

Total Rooms	
Bedrooms	0
Baths Full	0
Baths Half	0
Year Built	
Type	Residential Vacant Lot
Block Number	152
Listing #	253216
Taxes	4487.00

COMMENTS

For sale is a 3 townhome triplex package on Garfield Ave, price is \$335,000 per parcel and must buy all 3. Zoning & plans have been approved just waiting on final revision to be stamped and should be shovel ready in 2-4 weeks! On the corner of Park Blvd & Garfield Ave is a 5 townhome development (2 townhome duplex on Park Blvd which is NOT FOR SALE & these 3 on Garfield A...

PROPERTY FEATURES

CONTACT



Ask for Margarita Kobilianets
Berger Realty Inc
3160 Asbury Avenue, Ocean City
Call: 609-674-3417
Email to: mak@bergerrealty.com

Scan to see Property page.



Berger Realty

Since 1926



Berger Realty, Inc.
3160 Asbury Avenue
Ocean City, NJ 08226
1-877-237-4371 / 609-399-0076
info@bergerrealty.com



3800 Park, Wildwood, NJ, 08260

Price \$1,005,000.00

VACANT LAND

PROPERTY DETAILS

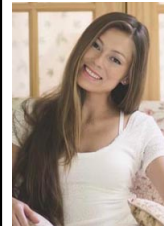
Total Rooms	
Bedrooms	0
Baths Full	0
Baths Half	0
Year Built	
Type	Residential Vacant Lot
Block Number	152
Listing #	253216
Taxes	4487.00

COMMENTS

For sale is a 3 townhome triplex package on Garfield Ave, price is \$335,000 per parcel and must buy all 3. Zoning & plans have been approved just waiting on final revision to be stamped and should be shovel ready in 2-4 weeks! On the corner of Park Blvd & Garfield Ave is a 5 townhome development (2 townhome duplex on Park Blvd which is NOT FOR SALE & these 3 on Garfield A...

PROPERTY FEATURES

CONTACT



Ask for Margarita Kobilianets
Berger Realty Inc
3160 Asbury Avenue, Ocean City
Call: 609-674-3417
Email to: mak@bergerrealty.com

Scan to see Property page.

