

Berger Realty

Since 1926



Berger Realty, Inc.
3160 Asbury Avenue
Ocean City, NJ 08226
1-877-237-4371 / 609-399-0076
info@bergerrealty.com



222 42nd., Sea Isle City, NJ, 08243

Price \$850,000.00

PROPERTY DETAILS

Total Rooms	6
Bedrooms	3
Baths Full	2
Baths Half	0
Year Built	1986
Type	Condo
Block Number	42.04
Listing #	253109
Taxes	2781.00

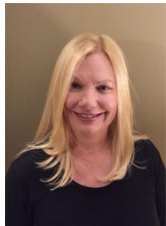
COMMENTS

...

PROPERTY FEATURES

OtherRooms	AppliancesIncluded	AlsoIncluded	Heating
Living Room	Range	Drapes	Gas Natural
Kitchen	Oven	Furniture	Forced Air
Dining Area	Microwave Oven		
	Refrigerator		
	Washer		
	Dryer		
Cooling	HotWater	Water	Sewer
Central Air	Gas	City	Public

CONTACT



Ask for Dawn Warren
Berger Realty Inc
3160 Asbury Avenue, Ocean City
Call: 609-432-4966
Email to: dew@bergerrealty.com

Scan to see Property page.



Berger Realty

Since 1926



Berger Realty, Inc.
3160 Asbury Avenue
Ocean City, NJ 08226
1-877-237-4371 / 609-399-0076
info@bergerrealty.com



222 42nd., Sea Isle City, NJ, 08243

Price \$850,000.00

PROPERTY DETAILS

Total Rooms	6
Bedrooms	3
Baths Full	2
Baths Half	0
Year Built	1986
Type	Condo
Block Number	42.04
Listing #	253109
Taxes	2781.00

COMMENTS

...

PROPERTY FEATURES

OtherRooms	AppliancesIncluded	AlsoIncluded	Heating
Living Room	Range	Drapes	Gas Natural
Kitchen	Oven	Furniture	Forced Air
Dining Area	Microwave Oven		
	Refrigerator		
	Washer		
	Dryer		
Cooling	HotWater	Water	Sewer
Central Air	Gas	City	Public

CONTACT



Ask for Dawn Warren
Berger Realty Inc
3160 Asbury Avenue, Ocean City
Call: 609-432-4966
Email to: dew@bergerrealty.com

Scan to see Property page.

