



Berger Realty, Inc.
3160 Asbury Avenue
Ocean City, NJ 08226
1-877-237-4371 / 609-399-0076
info@bergerrealty.com



1122 Clematis, Pleasantville, NJ, 08232

Price \$999,000.00



PROPERTY DETAILS

Total Rooms	
Bedrooms	0
Baths Full	0
Baths Half	0
Year Built	
Type	Other
Block Number	4
Listing #	253080
Taxes	10237.00

COMMENTS

DEVELOPERS • BUILDERS • INVESTORS - This massive 27.5+/- acre bayfront property presents a rare development opportunity. Possibilities are endless. Buyer due diligence required for zoning and subdivision....

PROPERTY FEATURES

CONTACT



Ask for Lauren Greiner
Berger Realty Inc
3160 Asbury Avenue, Ocean City
Call: 609-602-5960
Email to: lmg@bergerrealty.com

Scan to see Property page.



Berger Realty, Inc.
3160 Asbury Avenue
Ocean City, NJ 08226
1-877-237-4371 / 609-399-0076
info@bergerrealty.com



1122 Clematis, Pleasantville, NJ, 08232

Price \$999,000.00



PROPERTY DETAILS

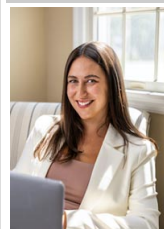
Total Rooms	
Bedrooms	0
Baths Full	0
Baths Half	0
Year Built	
Type	Other
Block Number	4
Listing #	253080
Taxes	10237.00

COMMENTS

DEVELOPERS • BUILDERS • INVESTORS - This massive 27.5+/- acre bayfront property presents a rare development opportunity. Possibilities are endless. Buyer due diligence required for zoning and subdivision....

PROPERTY FEATURES

CONTACT



Ask for Lauren Greiner
Berger Realty Inc
3160 Asbury Avenue, Ocean City
Call: 609-602-5960
Email to: lmg@bergerrealty.com

Scan to see Property page.

