

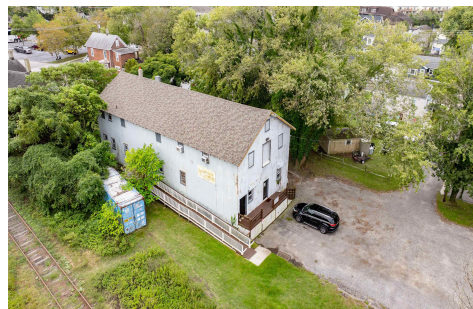


Berger Realty, Inc.  
3160 Asbury Avenue  
Ocean City, NJ 08226  
1-877-237-4371 / 609-399-0076  
info@bergerrealty.com



525 Elmira, Cape May, NJ, 08204

Price \$1,300,000.00



#### PROPERTY DETAILS

|              |                       |
|--------------|-----------------------|
| Total Rooms  |                       |
| Bedrooms     | 0                     |
| Baths Full   |                       |
| Baths Half   | 1                     |
| Year Built   | 1930                  |
| Type         | Commercial/Industrial |
| Block Number | 1061                  |
| Listing #    | 252962                |
| Taxes        | 5500.00               |

#### COMMENTS

property Type: Commercial / Warehouse Zoning: C-5 Commercial Lot Size: ~18,000 SF Building Size: ~4,800 SF. See Associated Docs for Surveys and additional information. Was originally the Morrow Nut House Candy factory now permitted for office, storage and bakery. Excellent opportunity in Cape May's C-5 Commercial District. This property offers approximately 4,800 squar...

#### PROPERTY FEATURES

|                        |   |                                 |  |
|------------------------|---|---------------------------------|--|
| Exterior<br>Metal      | OutsideFeatures<br>Security Light/System<br>Security Camera | ParkingGarage<br>6 To 10 Spaces | InteriorFeatures<br>Handicap Features<br>Restroom<br>Security System<br>Smoke/Fire Alarm |
| Heating<br>Gas Natural | Cooling<br>Central Air Conditioning                         | HotWater<br>Electric            | Water<br>City  |
| Sewer<br>City          |   |                                 |  |

#### CONTACT



Ask for Patricia Moss  
Berger Realty Inc  
3160 Asbury Avenue, Ocean City  
Call: 609-335-4616  
Email to: tcm@bergerrealty.com

Scan to see Property page.



Berger Realty, Inc.  
3160 Asbury Avenue  
Ocean City, NJ 08226  
1-877-237-4371 / 609-399-0076  
info@bergerrealty.com



525 Elmira, Cape May, NJ, 08204

Price \$1,300,000.00



#### PROPERTY DETAILS

|              |                       |
|--------------|-----------------------|
| Total Rooms  |                       |
| Bedrooms     | 0                     |
| Baths Full   |                       |
| Baths Half   | 1                     |
| Year Built   | 1930                  |
| Type         | Commercial/Industrial |
| Block Number | 1061                  |
| Listing #    | 252962                |
| Taxes        | 5500.00               |

#### COMMENTS

property Type: Commercial / Warehouse Zoning: C-5 Commercial Lot Size: ~18,000 SF Building Size: ~4,800 SF. See Associated Docs for Surveys and additional information. Was originally the Morrow Nut House Candy factory now permitted for office, storage and bakery. Excellent opportunity in Cape May's C-5 Commercial District. This property offers approximately 4,800 squar...

#### PROPERTY FEATURES

|                        |   |                                 |  |
|------------------------|---|---------------------------------|--|
| Exterior<br>Metal      | OutsideFeatures<br>Security Light/System<br>Security Camera | ParkingGarage<br>6 To 10 Spaces | InteriorFeatures<br>Handicap Features<br>Restroom<br>Security System<br>Smoke/Fire Alarm |
| Heating<br>Gas Natural | Cooling<br>Central Air Conditioning                         | HotWater<br>Electric            | Water<br>City  |
| Sewer<br>City          |   |                                 |  |

#### CONTACT



Ask for Patricia Moss  
Berger Realty Inc  
3160 Asbury Avenue, Ocean City  
Call: 609-335-4616  
Email to: tcm@bergerrealty.com

Scan to see Property page.

