



Berger Realty, Inc.
3160 Asbury Avenue
Ocean City, NJ 08226
1-877-237-4371 / 609-399-0076
info@bergerrealty.com



1621 New York, Cape May, NJ, 08204

Price \$3,995,000.00



PROPERTY DETAILS

Total Rooms	12
Bedrooms	4
Baths Full	3
Baths Half	2
Year Built	1999
Type	Single Family
Block Number	1187
Listing #	252753
Taxes	12684.00

COMMENTS

****OPEN HOUSE** Saturday 9/20 | 11am-1pm**** Nestled in the coveted East End of Historic Cape May, this custom 4BR 3.2BA three-story residence blends timeless elegance with modern luxury on a generous 75x125 lot just steps from the quiet sands of Poverty Beach. A gracious tiled foyer with a Jonathan Adler light fixture and a three-stop elevator introduces the home. The groun...

PROPERTY FEATURES

Exterior Vinyl	OutsideFeatures Patio Deck Enclosed/Covered Patio Fenced Yard Cable TV Sidewalks Outside Shower Sprinkler System	ParkingGarage Garage 2 Car Attached Auto Door Opener See Remarks 4 car parking	OtherRooms Living Room Dining Room Kitchen Laundry/Utility Room Library/Study
InteriorFeatures Cathedral Ceilings Elevator Fireplace- Gas Wood Flooring Storage Walk in Closet Tile Flooring Kitchen Island Beverage Refrigerator	AppliancesIncluded Microwave Oven Refrigerator Washer Dryer Dishwasher Smoke/Fire Detector Stove Natural Gas Wine Cooler Stainless steel appliance	AlsoIncluded Blinds Rugs Window Treatments	Basement Slab
Heating Gas Natural Forced Air Multi-Zoned	Cooling Central Air Condition Ceiling Fan Multi Zoned	HotWater Gas- Natural	Water City

Sewer
City

CONTACT

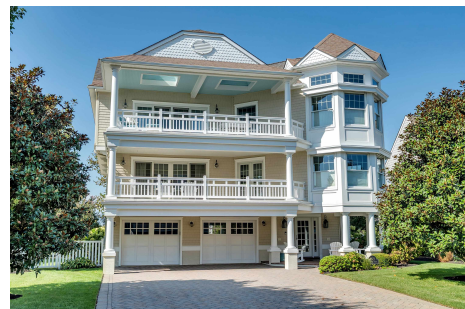


Berger Realty, Inc.
3160 Asbury Avenue
Ocean City, NJ 08226
1-877-237-4371 / 609-399-0076
info@bergerrealty.com



1621 New York, Cape May, NJ, 08204

Price \$3,995,000.00



PROPERTY DETAILS

Total Rooms	12
Bedrooms	4
Baths Full	3
Baths Half	2
Year Built	1999
Type	Single Family
Block Number	1187
Listing #	252753
Taxes	12684.00

COMMENTS

****OPEN HOUSE** Saturday 9/20 | 11am-1pm**** Nestled in the coveted East End of Historic Cape May, this custom 4BR 3.2BA three-story residence blends timeless elegance with modern luxury on a generous 75x125 lot just steps from the quiet sands of Poverty Beach. A gracious tiled foyer with a Jonathan Adler light fixture and a three-stop elevator introduces the home. The groun...

PROPERTY FEATURES

Exterior Vinyl	OutsideFeatures Patio Deck Enclosed/Covered Patio Fenced Yard Cable TV Sidewalks Outside Shower Sprinkler System	ParkingGarage Garage 2 Car Attached Auto Door Opener See Remarks 4 car parking	OtherRooms Living Room Dining Room Kitchen Laundry/Utility Room Library/Study
InteriorFeatures Cathedral Ceilings Elevator Fireplace- Gas Wood Flooring Storage Walk in Closet Tile Flooring Kitchen Island Beverage Refrigerator	AppliancesIncluded Microwave Oven Refrigerator Washer Dryer Dishwasher Smoke/Fire Detector Stove Natural Gas Wine Cooler Stainless steel appliance	AlsoIncluded Blinds Rugs Window Treatments	Basement Slab
Heating Gas Natural Forced Air Multi-Zoned	Cooling Central Air Condition Ceiling Fan Multi Zoned	HotWater Gas- Natural	Water City

Sewer
City

CONTACT

Scan to see Property page.

Berger Realty Inc
3160 Asbury Ave.
Ocean City, NJ 08226
Call: (609) 399-0076
Email to: info@bergerrealty.com
Web: www.bergerrealty.com



Scan to see Property page.

Berger Realty Inc
3160 Asbury Ave.
Ocean City, NJ 08226
Call: (609) 399-0076
Email to: info@bergerrealty.com
Web: www.bergerrealty.com

