



Berger Realty, Inc.  
3160 Asbury Avenue  
Ocean City, NJ 08226  
1-877-237-4371 / 609-399-0076  
info@bergerrealty.com



240 Marshall, North Cape May, NJ, 08204

Price \$200,000.00



#### PROPERTY DETAILS

Total Rooms	0
Bedrooms	0
Baths Full	0
Baths Half	0
Year Built	
Type	Vacant Lot
Block Number	413
Listing #	252595
Taxes	

#### COMMENTS

Newly subdivided and shovel ready 94.17x87.94irr vacant residential lot in the North Cape May area of Lower Township. The parcel is zoned for single family residential and is serviced by city water & city sewer. The seller will have installed the shared vacuum sewer pit ready for the new owners to make their connection when they build. Pick your plans, grab your builder...

#### PROPERTY FEATURES

#### CONTACT



Ask for Evelyn "Evie" Schweibinz  
Berger Realty Inc  
3160 Asbury Avenue, Ocean City  
Call:  
Email to: [ems@bergerrealty.com](mailto:ems@bergerrealty.com)

Scan to see Property page.



Berger Realty, Inc.  
3160 Asbury Avenue  
Ocean City, NJ 08226  
1-877-237-4371 / 609-399-0076  
info@bergerrealty.com



240 Marshall, North Cape May, NJ, 08204

Price \$200,000.00



#### PROPERTY DETAILS

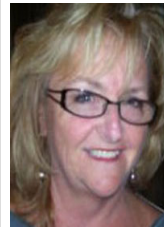
Total Rooms	0
Bedrooms	0
Baths Full	0
Baths Half	0
Year Built	
Type	Vacant Lot
Block Number	413
Listing #	252595
Taxes	

#### COMMENTS

Newly subdivided and shovel ready 94.17x87.94irr vacant residential lot in the North Cape May area of Lower Township. The parcel is zoned for single family residential and is serviced by city water & city sewer. The seller will have installed the shared vacuum sewer pit ready for the new owners to make their connection when they build. Pick your plans, grab your builder...

#### PROPERTY FEATURES

#### CONTACT



Ask for Evelyn "Evie" Schweibinz  
Berger Realty Inc  
3160 Asbury Avenue, Ocean City  
Call:  
Email to: [ems@bergerrealty.com](mailto:ems@bergerrealty.com)

Scan to see Property page.

