



Berger Realty, Inc.
3160 Asbury Avenue
Ocean City, NJ 08226
1-877-237-4371 / 609-399-0076
info@bergerrealty.com



12 Cedardale, Lower Township, NJ, 08251

Price \$664,990.00



PROPERTY DETAILS

Total Rooms	12
Bedrooms	3
Baths Full	3
Baths Half	0
Year Built	2025
Type	Single Family
Block Number	494.01
Listing #	252256
Taxes	

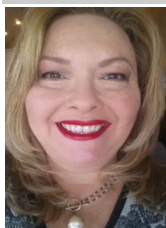
COMMENTS

Cape May County's Newest Community Now Selling FAST - Shawmount Village features 20 new single family ranch style homes in the heart of Lower Township, NJ within walking distance to beautiful bay views and the serene Cape Island area to enjoy nature trails and wildlife observation! Own a luxury, new construction ranch home with all upgrades included, in close proximity t...

PROPERTY FEATURES

Exterior	OutsideFeatures	ParkingGarage	OtherRooms
Vinyl	Enclosed/Covered Patio Porch	Garage 2 Car Attached	Living Room Dining Room Kitchen Eat-In-Kitchen Dining Area Pantry Laundry/Utility Room 1st Floor Primary Bedroom
InteriorFeatures	AppliancesIncluded	Basement	Heating
Fireplace- Gas Walk in Closet Tile Flooring Vinyl Flooring Kitchen Island	Range Oven Microwave Oven Dishwasher Stove Natural Gas	Slab	Gas Natural
Cooling	HotWater	Water	Sewer
Central Air Condition	Gas- Natural	Public	Public

CONTACT



Ask for Theresa Maina
Berger Realty Inc
3160 Asbury Avenue, Ocean City
Call: 609-703-7725
Email to: tam@bergerrealty.com

Scan to  page.



Berger Realty, Inc.
3160 Asbury Avenue
Ocean City, NJ 08226
1-877-237-4371 / 609-399-0076
info@bergerrealty.com



12 Cedardale, Lower Township, NJ, 08251

Price \$664,990.00



PROPERTY DETAILS

Total Rooms	12
Bedrooms	3
Baths Full	3
Baths Half	0
Year Built	2025
Type	Single Family
Block Number	494.01
Listing #	252256
Taxes	

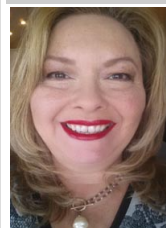
COMMENTS

Cape May County's Newest Community Now Selling FAST - Shawmount Village features 20 new single family ranch style homes in the heart of Lower Township, NJ within walking distance to beautiful bay views and the serene Cape Island area to enjoy nature trails and wildlife observation! Own a luxury, new construction ranch home with all upgrades included, in close proximity t...

PROPERTY FEATURES

Exterior	OutsideFeatures	ParkingGarage	OtherRooms
Vinyl	Enclosed/Covered Patio Porch	Garage 2 Car Attached	Living Room Dining Room Kitchen Eat-In-Kitchen Dining Area Pantry Laundry/Utility Room 1st Floor Primary Bedroom
InteriorFeatures	AppliancesIncluded	Basement	Heating
Fireplace- Gas Walk in Closet Tile Flooring Vinyl Flooring Kitchen Island	Range Oven Microwave Oven Dishwasher Stove Natural Gas	Slab	Gas Natural
Cooling	HotWater	Water	Sewer
Central Air Condition	Gas- Natural	Public	Public

CONTACT



Ask for Theresa Maina
Berger Realty Inc
3160 Asbury Avenue, Ocean City
Call: 609-703-7725
Email to: tam@bergerrealty.com

Scan to  page.

