



Berger Realty, Inc.  
3160 Asbury Avenue  
Ocean City, NJ 08226  
1-877-237-4371 / 609-399-0076  
info@bergerrealty.com



401 Fern, Cape May Beach, NJ, 08251

Price \$1,250,000.00



#### PROPERTY DETAILS

Total Rooms	12
Bedrooms	4
Baths Full	3
Baths Half	1
Year Built	1979
Type	Single Family
Block Number	512.16
Listing #	251559
Taxes	6948.00

#### COMMENTS

Welcome to this exquisite multi-level residence, gracefully situated on a spacious 0.23-acre corner lot in the highly desirable Cape May Beach community. Just two blocks from the serene shores of the Delaware Bay—with direct beach access at the end of Fern Road—this home beautifully marries coastal elegance with timeless Craftsman and modern farmhouse design. Spanning ...

#### PROPERTY FEATURES

Exterior Other	OutsideFeatures Patio Deck Storage Building Cable TV See Remarks	ParkingGarage Garage 1 Car Detached Heated Garage See Remarks	OtherRooms Living Room Dining Room Kitchen Recreation/Family Breakfast Nook Laundry/Utility Room Florida Room Storage Attic See Remarks 1st Floor Primary Bedroom
InteriorFeatures Wood Flooring Storage Walk in Closet Wood Burning Stove Kitchen Island	AppliancesIncluded Range Oven Microwave Oven Refrigerator Washer Dryer Dishwasher	Basement Crawl Space	Heating Gas Natural Forced Air Multi-Zoned
Cooling Central Air Condition Multi Zoned	HotWater On Demand	Water City	Sewer City

#### CONTACT

Ask for Donna Brown  
Berger Realty Inc

Scan to see Property page.

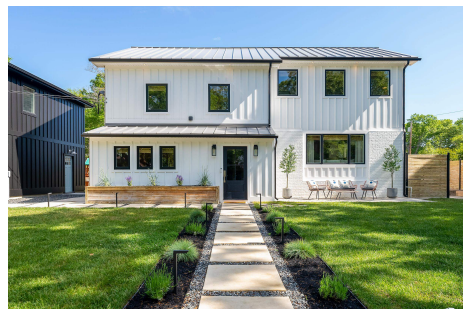


Berger Realty, Inc.  
3160 Asbury Avenue  
Ocean City, NJ 08226  
1-877-237-4371 / 609-399-0076  
info@bergerrealty.com



401 Fern, Cape May Beach, NJ, 08251

Price \$1,250,000.00



#### PROPERTY DETAILS

Total Rooms	12
Bedrooms	4
Baths Full	3
Baths Half	1
Year Built	1979
Type	Single Family
Block Number	512.16
Listing #	251559
Taxes	6948.00

#### COMMENTS

Welcome to this exquisite multi-level residence, gracefully situated on a spacious 0.23-acre corner lot in the highly desirable Cape May Beach community. Just two blocks from the serene shores of the Delaware Bay—with direct beach access at the end of Fern Road—this home beautifully marries coastal elegance with timeless Craftsman and modern farmhouse design. Spanning ...

#### PROPERTY FEATURES

Exterior Other	OutsideFeatures Patio Deck Storage Building Cable TV See Remarks	ParkingGarage Garage 1 Car Detached Heated Garage See Remarks	OtherRooms Living Room Dining Room Kitchen Recreation/Family Breakfast Nook Laundry/Utility Room Florida Room Storage Attic See Remarks 1st Floor Primary Bedroom
InteriorFeatures Wood Flooring Storage Walk in Closet Wood Burning Stove Kitchen Island	AppliancesIncluded Range Oven Microwave Oven Refrigerator Washer Dryer Dishwasher	Basement Crawl Space	Heating Gas Natural Forced Air Multi-Zoned
Cooling Central Air Condition Multi Zoned	HotWater On Demand	Water City	Sewer City

#### CONTACT

Ask for Donna Brown  
Berger Realty Inc

Scan to see Property page.



**3160 Asbury Avenue, Ocean City**  
**Call: 609-425-8352**  
**Email to: [dmb@bergerrealty.com](mailto:dmb@bergerrealty.com)**



**3160 Asbury Avenue, Ocean City**  
**Call: 609-425-8352**  
**Email to: [dmb@bergerrealty.com](mailto:dmb@bergerrealty.com)**

