



Berger Realty, Inc.  
3160 Asbury Avenue  
Ocean City, NJ 08226  
1-877-237-4371 / 609-399-0076  
info@bergerrealty.com



1205 Rt 9 South, Cape May Court House, NJ, 08210

Price \$1,250,000.00

#### PROPERTY DETAILS

Total Rooms	
Bedrooms	0
Baths Full	0
Baths Half	0
Year Built	
Type	Vacant Lot
Block Number	355.0
Listing #	251462
Taxes	5171.00

#### COMMENTS

*Partially cleared lot on Rt 9 with plenty of exposure close to rt 147 with a Single family house, workshop and storage buildings on Site. Zoned TB which allows a wide range of businesses that are generally permitted, including retail stores, service businesses, and offices. These zones aim to serve both local residents and potentially a broader area with convenience goods ...*

#### PROPERTY FEATURES

#### CONTACT



Ask for Evelyn "Evie" Schweibinz  
Berger Realty Inc  
3160 Asbury Avenue, Ocean City  
Call:  
Email to: [ems@bergerrealty.com](mailto:ems@bergerrealty.com)

Scan to see Property page.



Berger Realty, Inc.  
3160 Asbury Avenue  
Ocean City, NJ 08226  
1-877-237-4371 / 609-399-0076  
info@bergerrealty.com



1205 Rt 9 South, Cape May Court House, NJ, 08210

Price \$1,250,000.00

#### PROPERTY DETAILS

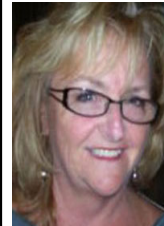
Total Rooms	
Bedrooms	0
Baths Full	0
Baths Half	0
Year Built	
Type	Vacant Lot
Block Number	355.0
Listing #	251462
Taxes	5171.00

#### COMMENTS

*Partially cleared lot on Rt 9 with plenty of exposure close to rt 147 with a Single family house, workshop and storage buildings on Site. Zoned TB which allows a wide range of businesses that are generally permitted, including retail stores, service businesses, and offices. These zones aim to serve both local residents and potentially a broader area with convenience goods ...*

#### PROPERTY FEATURES

#### CONTACT



Ask for Evelyn "Evie" Schweibinz  
Berger Realty Inc  
3160 Asbury Avenue, Ocean City  
Call:  
Email to: [ems@bergerrealty.com](mailto:ems@bergerrealty.com)

Scan to see Property page.

