



Berger Realty, Inc.  
3160 Asbury Avenue  
Ocean City, NJ 08226  
1-877-237-4371 / 609-399-0076  
info@bergerrealty.com



221 Sunset, West Cape May, NJ, 08204

Price \$1,800,000.00



#### PROPERTY DETAILS

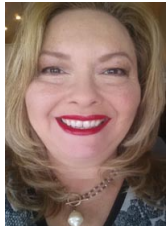
Total Rooms	
Bedrooms	0
Baths Full	0
Baths Half	0
Year Built	
Type	Residential Vacant Lot
Block Number	38
Listing #	251440
Taxes	9322.00

#### COMMENTS

*Price Reduced! Multi-Class Prime Commercial Frontage in West Cape May. Welcome to 221 Sunset Boulevard in the highly sought after West Cape May! This is a Developer's and Investor's Dream in the C-3 Zoned Sunset Commercial District with the rare opportunity for Mixed-Use Development in the heart of Cape May. This 15,000sf lot with 100sf frontage on Sunset Boulevard all...*

#### PROPERTY FEATURES

#### CONTACT



Ask for Theresa Maina  
Berger Realty Inc  
3160 Asbury Avenue, Ocean City  
Call: 609-703-7725  
Email to: tam@bergerrealty.com

Scan to see Property page.



Berger Realty, Inc.  
3160 Asbury Avenue  
Ocean City, NJ 08226  
1-877-237-4371 / 609-399-0076  
info@bergerrealty.com



221 Sunset, West Cape May, NJ, 08204

Price \$1,800,000.00



#### PROPERTY DETAILS

Total Rooms	
Bedrooms	0
Baths Full	0
Baths Half	0
Year Built	
Type	Residential Vacant Lot
Block Number	38
Listing #	251440
Taxes	9322.00

#### COMMENTS

*Price Reduced! Multi-Class Prime Commercial Frontage in West Cape May. Welcome to 221 Sunset Boulevard in the highly sought after West Cape May! This is a Developer's and Investor's Dream in the C-3 Zoned Sunset Commercial District with the rare opportunity for Mixed-Use Development in the heart of Cape May. This 15,000sf lot with 100sf frontage on Sunset Boulevard all...*

#### PROPERTY FEATURES

#### CONTACT



Ask for Theresa Maina  
Berger Realty Inc  
3160 Asbury Avenue, Ocean City  
Call: 609-703-7725  
Email to: tam@bergerrealty.com

Scan to see Property page.

