

# Berger Realty

Since 1928



Berger Realty, Inc  
1330 Bay Avenue  
Ocean City, NJ 08226  
609-391-1330/609-391-1300  
info@bergerrealty.com



601 Pittsburgh, Cape May, NJ, 08204

Price \$1,500,000.00

## PROPERTY DETAILS

Total Rooms	
Bedrooms	0
Baths Full	0
Baths Half	0
Year Built	
Type	Residential Vacant Lot
Block Number	1167
Listing #	251391
Taxes	541.00

## COMMENTS

*Rare Opportunity to own a large 125 x 125 lot in Cape May with an opportunity to Build your own Custom Home on the Island. Located within blocks of the Cape May Harbor and Marina District and neighboring up against Preserved Land. Walk to several shops, The South Jersey and Cape May Marina's and Restaurants like the nostalgic Lobster House, Mayer's, C-View, and Lucky B...*

## PROPERTY FEATURES

## CONTACT



Ask for Joanne Kelly  
Berger Realty Inc  
1330 Bay Avenue, Ocean City  
Call: 609-425-2106  
Email to: jmk@bergerrealty.com

Scan to see Property page.



# Berger Realty

Since 1928



Berger Realty, Inc  
1330 Bay Avenue  
Ocean City, NJ 08226  
609-391-1330/609-391-1300  
info@bergerrealty.com



601 Pittsburgh, Cape May, NJ, 08204

Price \$1,500,000.00

## PROPERTY DETAILS

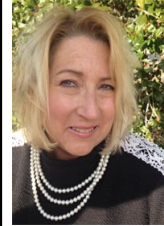
Total Rooms	
Bedrooms	0
Baths Full	0
Baths Half	0
Year Built	
Type	Residential Vacant Lot
Block Number	1167
Listing #	251391
Taxes	541.00

## COMMENTS

*Rare Opportunity to own a large 125 x 125 lot in Cape May with an opportunity to Build your own Custom Home on the Island. Located within blocks of the Cape May Harbor and Marina District and neighboring up against Preserved Land. Walk to several shops, The South Jersey and Cape May Marina's and Restaurants like the nostalgic Lobster House, Mayer's, C-View, and Lucky B...*

## PROPERTY FEATURES

## CONTACT



Ask for Joanne Kelly  
Berger Realty Inc  
1330 Bay Avenue, Ocean City  
Call: 609-425-2106  
Email to: jmk@bergerrealty.com

Scan to see Property page.

