



Berger Realty, Inc.
3160 Asbury Avenue
Ocean City, NJ 08226
1-877-237-4371 / 609-399-0076
info@bergerrealty.com



1122 Clematis, Pleasantville, NJ, 08232

Price \$1,200,000.00



PROPERTY DETAILS

Total Rooms	11
Bedrooms	4
Baths Full	3
Baths Half	1
Year Built	1925
Type	Single Family
Block Number	4
Listing #	251367
Taxes	10237.00

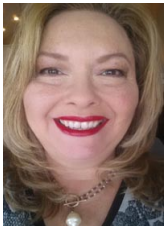
COMMENTS

DEVELOPERS • BUILDERS • INVESTORS - This massive 27.5+/- acre bayfront property presents a rare development opportunity. Possibilities are endless. Buyer due diligence required for zoning and subdivision....

PROPERTY FEATURES

Heating	Cooling	HotWater	Water
Gas Natural	Central Air Condition	Gas- Natural	Public
Sewer			
Public			

CONTACT



Ask for Theresa Maina
Berger Realty Inc
3160 Asbury Avenue, Ocean City
Call: 609-703-7725
Email to: tam@bergerrealty.com

Scan to see Property page.



Berger Realty, Inc.
3160 Asbury Avenue
Ocean City, NJ 08226
1-877-237-4371 / 609-399-0076
info@bergerrealty.com



1122 Clematis, Pleasantville, NJ, 08232

Price \$1,200,000.00



PROPERTY DETAILS

Total Rooms	11
Bedrooms	4
Baths Full	3
Baths Half	1
Year Built	1925
Type	Single Family
Block Number	4
Listing #	251367
Taxes	10237.00

COMMENTS

DEVELOPERS • BUILDERS • INVESTORS - This massive 27.5+/- acre bayfront property presents a rare development opportunity. Possibilities are endless. Buyer due diligence required for zoning and subdivision....

PROPERTY FEATURES

Heating	Cooling	HotWater	Water
Gas Natural	Central Air Condition	Gas- Natural	Public
Sewer			
Public			

CONTACT



Ask for Theresa Maina
Berger Realty Inc
3160 Asbury Avenue, Ocean City
Call: 609-703-7725
Email to: tam@bergerrealty.com

Scan to see Property page.

