

Berger Realty

Since 1926



Berger Realty, Inc.
3160 Asbury Avenue
Ocean City, NJ 08226
1-877-237-4371 / 609-399-0076
info@bergerrealty.com



3700 Boardwalk, 204S, Sea Isle City, NJ, 08243

Price \$839,900.00



PROPERTY DETAILS

| | |
|--------------|----------|
| Total Rooms | 5 |
| Bedrooms | 2 |
| Baths Full | 2 |
| Baths Half | 0 |
| Year Built | 1972 |
| Type | Condo |
| Block Number | 00035 01 |
| Listing # | 251340 |
| Taxes | 3524.00 |

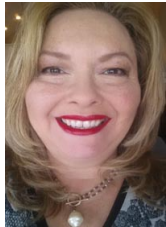
COMMENTS

Beach front and stunning sunrise and sunset views, who doesn't want that? Welcome to your new retreat down in the beautiful Sea Isle City - 204S Spinnaker! Enjoy the ultimate in coastal comfort with this beautifully updated 2-bedroom, 2-full bathroom beachfront condo in Sea Isle City, NJ. Boasting 1,053 square feet of stylish living space, this modern retreat features a b...

PROPERTY FEATURES

| | | | |
|------------------|------------|-------------|----------|
| ParkingGarage | Heating | Cooling | HotWater |
| Assigned Parking | Electric | Central Air | Electric |
| | Forced Air | Electric | |
| Water | Sewer | | |
| Public | Public | | |

CONTACT



Ask for Theresa Maina
Berger Realty Inc
3160 Asbury Avenue, Ocean City
Call: 609-703-7725
Email to: tam@bergerrealty.com

Scan to see Property page.



Berger Realty

Since 1926



Berger Realty, Inc.
3160 Asbury Avenue
Ocean City, NJ 08226
1-877-237-4371 / 609-399-0076
info@bergerrealty.com



3700 Boardwalk, 204S, Sea Isle City, NJ, 08243

Price \$839,900.00



PROPERTY DETAILS

| | |
|--------------|----------|
| Total Rooms | 5 |
| Bedrooms | 2 |
| Baths Full | 2 |
| Baths Half | 0 |
| Year Built | 1972 |
| Type | Condo |
| Block Number | 00035 01 |
| Listing # | 251340 |
| Taxes | 3524.00 |

COMMENTS

Beach front and stunning sunrise and sunset views, who doesn't want that? Welcome to your new retreat down in the beautiful Sea Isle City - 204S Spinnaker! Enjoy the ultimate in coastal comfort with this beautifully updated 2-bedroom, 2-full bathroom beachfront condo in Sea Isle City, NJ. Boasting 1,053 square feet of stylish living space, this modern retreat features a b...

PROPERTY FEATURES

| | | | |
|------------------|------------|-------------|----------|
| ParkingGarage | Heating | Cooling | HotWater |
| Assigned Parking | Electric | Central Air | Electric |
| | Forced Air | Electric | |
| Water | Sewer | | |
| Public | Public | | |

CONTACT



Ask for Theresa Maina
Berger Realty Inc
3160 Asbury Avenue, Ocean City
Call: 609-703-7725
Email to: tam@bergerrealty.com

Scan to see Property page.

