

# Berger Realty

Since 1926



Berger Realty, Inc.  
3160 Asbury Avenue  
Ocean City, NJ 08226  
1-877-237-4371 / 609-399-0076  
info@bergerrealty.com



12 Seagrove, Swainton, NJ, 08210

Price \$254,900.00

**VACANT  
LAND**

## PROPERTY DETAILS

Total Rooms	0
Bedrooms	0
Baths Full	0
Baths Half	0
Year Built	
Type	Vacant Lot
Block Number	114
Listing #	251312
Taxes	1675.00

## COMMENTS

*VACANT LOT, ready to build, in the beautiful Seagrove neighborhood. Lot has been cleared, filled and has a new well and septic. A really pretty development that is a short ride to the wonderful beaches of Avalon, close to several golf courses, the Cape May County Park and Zoo, hospital, shopping and dining in downtown Cape May Court House. A set of approved building p...*

## PROPERTY FEATURES

## CONTACT



Ask for Sara Varani  
Berger Realty Inc  
3160 Asbury Avenue, Ocean City  
Call:  
Email to: sev@bergerrealty.com

Scan to see Property page.



# Berger Realty

Since 1926



Berger Realty, Inc.  
3160 Asbury Avenue  
Ocean City, NJ 08226  
1-877-237-4371 / 609-399-0076  
info@bergerrealty.com



12 Seagrove, Swainton, NJ, 08210

Price \$254,900.00

**VACANT  
LAND**

## PROPERTY DETAILS

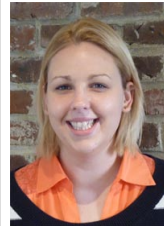
Total Rooms	0
Bedrooms	0
Baths Full	0
Baths Half	0
Year Built	
Type	Vacant Lot
Block Number	114
Listing #	251312
Taxes	1675.00

## COMMENTS

*VACANT LOT, ready to build, in the beautiful Seagrove neighborhood. Lot has been cleared, filled and has a new well and septic. A really pretty development that is a short ride to the wonderful beaches of Avalon, close to several golf courses, the Cape May County Park and Zoo, hospital, shopping and dining in downtown Cape May Court House. A set of approved building p...*

## PROPERTY FEATURES

## CONTACT



Ask for Sara Varani  
Berger Realty Inc  
3160 Asbury Avenue, Ocean City  
Call:  
Email to: sev@bergerrealty.com

Scan to see Property page.

