



Berger Realty, Inc.
3160 Asbury Avenue
Ocean City, NJ 08226
1-877-237-4371 / 609-399-0076
info@bergerrealty.com



12 Seagrove, Swainton, NJ, 08210

Price \$254,900.00



PROPERTY DETAILS

Total Rooms	0
Bedrooms	0
Baths Full	0
Baths Half	0
Year Built	
Type	Vacant Lot
Block Number	114
Listing #	251312
Taxes	1675.00

COMMENTS

VACANT LOT, ready to build, in the beautiful Seagrove neighborhood. Lot has been cleared, filled and has a new well and septic. A really pretty development that is a short ride to the wonderful beaches of Avalon, close to several golf courses, the Cape May County Park and Zoo, hospital, shopping and dining in downtown Cape May Court House. A set of approved building p...

PROPERTY FEATURES

CONTACT



Ask for Margarita Kobilianets
Berger Realty Inc
3160 Asbury Avenue, Ocean City
Call: 609-674-3417
Email to: mak@bergerrealty.com

Scan to see Property page.



Berger Realty, Inc.
3160 Asbury Avenue
Ocean City, NJ 08226
1-877-237-4371 / 609-399-0076
info@bergerrealty.com



12 Seagrove, Swainton, NJ, 08210

Price \$254,900.00



PROPERTY DETAILS

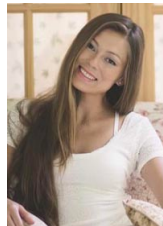
Total Rooms	0
Bedrooms	0
Baths Full	0
Baths Half	0
Year Built	
Type	Vacant Lot
Block Number	114
Listing #	251312
Taxes	1675.00

COMMENTS

VACANT LOT, ready to build, in the beautiful Seagrove neighborhood. Lot has been cleared, filled and has a new well and septic. A really pretty development that is a short ride to the wonderful beaches of Avalon, close to several golf courses, the Cape May County Park and Zoo, hospital, shopping and dining in downtown Cape May Court House. A set of approved building p...

PROPERTY FEATURES

CONTACT



Ask for Margarita Kobilianets
Berger Realty Inc
3160 Asbury Avenue, Ocean City
Call: 609-674-3417
Email to: mak@bergerrealty.com

Scan to see Property page.

