

Berger Realty

Since 1926



Berger Realty, Inc.
3160 Asbury Avenue
Ocean City, NJ 08226
1-877-237-4371 / 609-399-0076
info@bergerrealty.com



310 42nd, Sea Isle City, NJ, 08243

Price \$1,199,000.00



PROPERTY DETAILS

Total Rooms	6
Bedrooms	2
Baths Full	2
Baths Half	1
Year Built	2025
Type	Condo
Block Number	41.05
Listing #	251278
Taxes	1.00

COMMENTS

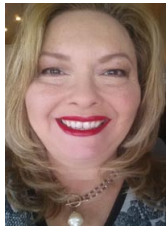
Welcome to your waterfront oasis at 310 42nd Place, Sea Isle City, NJ! This stunning two-story new construction unit at the gateway to Sea Isle City has just completed and ready for you to move in. Located conveniently near the vibrant "Fish Alley," you'll have easy access to all the local dining and entertainment options. The property boasts amazing views in every di...

PROPERTY FEATURES

UnitFeatures	ParkingGarage	OtherRooms	AppliancesIncluded
Hardwood Floors	Assigned Parking	Living Room	Range
Cathedral Ceiling	Concrete Driveway	Dining Room	Oven
		Kitchen	Refrigerator
			Washer
			Dryer
			Dishwasher
			Stainless Steel
			Appliance
Heating	Cooling	HotWater	Water
Gas Natural	Central Air	Gas	City
Forced Air			

Sewer
City

CONTACT



Ask for Theresa Maina
Berger Realty Inc
3160 Asbury Avenue, Ocean City
Call: 609-703-7725
Email to: tam@bergerrealty.com

Scan to see Property page.



Berger Realty

Since 1926



Berger Realty, Inc.
3160 Asbury Avenue
Ocean City, NJ 08226
1-877-237-4371 / 609-399-0076
info@bergerrealty.com



310 42nd, Sea Isle City, NJ, 08243

Price \$1,199,000.00



PROPERTY DETAILS

Total Rooms	6
Bedrooms	2
Baths Full	2
Baths Half	1
Year Built	2025
Type	Condo
Block Number	41.05
Listing #	251278
Taxes	1.00

COMMENTS

Welcome to your waterfront oasis at 310 42nd Place, Sea Isle City, NJ! This stunning two-story new construction unit at the gateway to Sea Isle City has just completed and ready for you to move in. Located conveniently near the vibrant "Fish Alley," you'll have easy access to all the local dining and entertainment options. The property boasts amazing views in every di...

PROPERTY FEATURES

UnitFeatures	ParkingGarage	OtherRooms	AppliancesIncluded
Hardwood Floors	Assigned Parking	Living Room	Range
Cathedral Ceiling	Concrete Driveway	Dining Room	Oven
		Kitchen	Refrigerator
			Washer
			Dryer
			Dishwasher
			Stainless Steel
			Appliance
Heating	Cooling	HotWater	Water
Gas Natural	Central Air	Gas	City
Forced Air			

Sewer
City

CONTACT



Ask for Theresa Maina
Berger Realty Inc
3160 Asbury Avenue, Ocean City
Call: 609-703-7725
Email to: tam@bergerrealty.com

Scan to see Property page.

