



Berger Realty, Inc.  
3160 Asbury Avenue  
Ocean City, NJ 08226  
1-877-237-4371 / 609-399-0076  
info@bergerrealty.com



290 Route 47 South, Cape May Court House, NJ, 08210

Price \$1,349,000.00

#### PROPERTY DETAILS

Total Rooms	
Bedrooms	0
Baths Full	0
Baths Half	0
Year Built	
Type	Vacant Lot
Block Number	472
Listing #	251249
Taxes	6033.00

#### COMMENTS

**PRELIMINARY PLANS FOR A 6 LOT SUBDIVISION - EACH LOT IS A MINIMUM 3.5 ACRES.**  
Extremely Large parcel of land in Cape May County with a significant portion of upland to use. Let your vision be your guide. Currently zoned Residential Business. drawn property lines are approximate....

#### PROPERTY FEATURES

#### CONTACT



Ask for Margarita Kobilianets  
Berger Realty Inc  
3160 Asbury Avenue, Ocean City  
Call: 609-674-3417  
Email to: mak@bergerrealty.com

Scan to see Property page.



Berger Realty, Inc.  
3160 Asbury Avenue  
Ocean City, NJ 08226  
1-877-237-4371 / 609-399-0076  
info@bergerrealty.com



290 Route 47 South, Cape May Court House, NJ, 08210

Price \$1,349,000.00

#### PROPERTY DETAILS

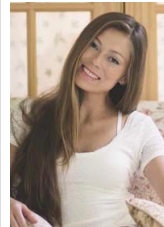
Total Rooms	
Bedrooms	0
Baths Full	0
Baths Half	0
Year Built	
Type	Vacant Lot
Block Number	472
Listing #	251249
Taxes	6033.00

#### COMMENTS

**PRELIMINARY PLANS FOR A 6 LOT SUBDIVISION - EACH LOT IS A MINIMUM 3.5 ACRES.**  
Extremely Large parcel of land in Cape May County with a significant portion of upland to use. Let your vision be your guide. Currently zoned Residential Business. drawn property lines are approximate....

#### PROPERTY FEATURES

#### CONTACT



Ask for Margarita Kobilianets  
Berger Realty Inc  
3160 Asbury Avenue, Ocean City  
Call: 609-674-3417  
Email to: mak@bergerrealty.com

Scan to see Property page.

