



Berger Realty, Inc.  
3160 Asbury Avenue  
Ocean City, NJ 08226  
1-877-237-4371 / 609-399-0076  
info@bergerrealty.com



149 Fishing Creek, North Cape May, NJ, 08204

Price \$80,000.00



#### PROPERTY DETAILS

Total Rooms	
Bedrooms	0
Baths Full	0
Baths Half	0
Year Built	
Type	Vacant Lot
Block Number	416
Listing #	251145
Taxes	426.00

#### COMMENTS

**\*\*\*APPROVED BUILDABLE LOT\*\*\*** Vacant Lot in Fishing Creek. Survey and LOI provided with an approved 50 foot wetlands buffer. All building permits and due diligence are the responsibility of the buyer. All DEP work has been completed and approved. Lot lines in photos are approximate. Both Sellers are Licensed NJ Real Estate Agents. There is a road opening moratorium on Fishin...

#### PROPERTY FEATURES

#### CONTACT



Ask for Tara Cruser-Moss  
Berger Realty Inc  
3160 Asbury Avenue, Ocean City  
Call: 609-317-5396  
Email to: tcm@bergerrealty.com

Scan to see Property page.

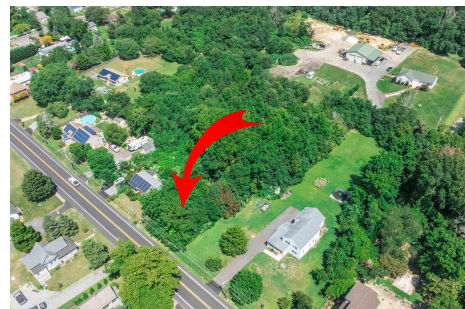


Berger Realty, Inc.  
3160 Asbury Avenue  
Ocean City, NJ 08226  
1-877-237-4371 / 609-399-0076  
info@bergerrealty.com



149 Fishing Creek, North Cape May, NJ, 08204

Price \$80,000.00



#### PROPERTY DETAILS

Total Rooms	
Bedrooms	0
Baths Full	0
Baths Half	0
Year Built	
Type	Vacant Lot
Block Number	416
Listing #	251145
Taxes	426.00

#### COMMENTS

**\*\*\*APPROVED BUILDABLE LOT\*\*\*** Vacant Lot in Fishing Creek. Survey and LOI provided with an approved 50 foot wetlands buffer. All building permits and due diligence are the responsibility of the buyer. All DEP work has been completed and approved. Lot lines in photos are approximate. Both Sellers are Licensed NJ Real Estate Agents. There is a road opening moratorium on Fishin...

#### PROPERTY FEATURES

#### CONTACT



Ask for Tara Cruser-Moss  
Berger Realty Inc  
3160 Asbury Avenue, Ocean City  
Call: 609-317-5396  
Email to: tcm@bergerrealty.com

Scan to see Property page.

