



Berger Realty, Inc.  
3160 Asbury Avenue  
Ocean City, NJ 08226  
1-877-237-4371 / 609-399-0076  
info@bergerrealty.com



4200 Central Ave, Sea Isle City, NJ, 08243

Price \$1,299,000.00

#### PROPERTY DETAILS

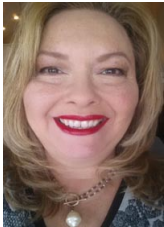
Total Rooms	0
Bedrooms	0
Baths Full	0
Baths Half	0
Year Built	
Type	Residential Vacant Lot
Block Number	42.04
Listing #	251140
Taxes	5638.00

#### COMMENTS

*LOT in the Heart of Sea Isle City – 4200 Central Ave A unique opportunity to own a buildable LOT in the heart of Sea Isle City! Please Note: The existing structure on the lot will be removed prior to settlement, per a determination by the City of Sea Isle City due to a prior subdivision. This versatile 55' x 75' lot offers endless possibilities to build your dream s...*

#### PROPERTY FEATURES

#### CONTACT



Ask for Theresa Maina  
Berger Realty Inc  
3160 Asbury Avenue, Ocean City  
Call: 609-703-7725  
Email to: tam@bergerrealty.com

Scan to see Property page.



Berger Realty, Inc.  
3160 Asbury Avenue  
Ocean City, NJ 08226  
1-877-237-4371 / 609-399-0076  
info@bergerrealty.com



4200 Central Ave, Sea Isle City, NJ, 08243

Price \$1,299,000.00

#### PROPERTY DETAILS

Total Rooms	0
Bedrooms	0
Baths Full	0
Baths Half	0
Year Built	
Type	Residential Vacant Lot
Block Number	42.04
Listing #	251140
Taxes	5638.00

#### COMMENTS

*LOT in the Heart of Sea Isle City – 4200 Central Ave A unique opportunity to own a buildable LOT in the heart of Sea Isle City! Please Note: The existing structure on the lot will be removed prior to settlement, per a determination by the City of Sea Isle City due to a prior subdivision. This versatile 55' x 75' lot offers endless possibilities to build your dream s...*

#### PROPERTY FEATURES

#### CONTACT



Ask for Theresa Maina  
Berger Realty Inc  
3160 Asbury Avenue, Ocean City  
Call: 609-703-7725  
Email to: tam@bergerrealty.com

Scan to see Property page.

