



Berger Realty, Inc.
3160 Asbury Avenue
Ocean City, NJ 08226
1-877-237-4371 / 609-399-0076
info@bergerrealty.com



1187 Route 9 S, Cape May Court House, NJ, 08210

Price \$525,000.00

PROPERTY DETAILS

Total Rooms	
Bedrooms	0
Baths Full	
Baths Half	
Year Built	
Type	Mixed Use
Block Number	355
Listing #	251025
Taxes	6203.00

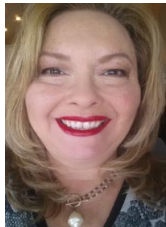
COMMENTS

VERSATILE MULTI-USE PROPERTY WITH RESIDENTIAL, COMMERCIAL & RESIDENTIAL. 3 buildings all on one property!! (1) 2bedroom 1 bath single family home. (2) 40' x 60' commercial steel building with large garage door front and back with individual offices and storage. (3) A small retail, showroom or office building. Property has city sewer and water. Whether you're looking t...

PROPERTY FEATURES

OutsideFeatures	ParkingGarage	OtherRooms	InteriorFeatures
Truck Door	6 To 10 Spaces Paved	Retail Store	Storage
Heating	Cooling	Water	Sewer
Gas Natural	Central Air Conditioning	Well	City
Forced Air			

CONTACT



Ask for Theresa Maina
Berger Realty Inc
3160 Asbury Avenue, Ocean City
Call: 609-703-7725
Email to: tam@bergerrealty.com

Scan to see Property page.



Berger Realty, Inc.
3160 Asbury Avenue
Ocean City, NJ 08226
1-877-237-4371 / 609-399-0076
info@bergerrealty.com



1187 Route 9 S, Cape May Court House, NJ, 08210

Price \$525,000.00

PROPERTY DETAILS

Total Rooms	
Bedrooms	0
Baths Full	
Baths Half	
Year Built	
Type	Mixed Use
Block Number	355
Listing #	251025
Taxes	6203.00

COMMENTS

VERSATILE MULTI-USE PROPERTY WITH RESIDENTIAL, COMMERCIAL & RESIDENTIAL. 3 buildings all on one property!! (1) 2bedroom 1 bath single family home. (2) 40' x 60' commercial steel building with large garage door front and back with individual offices and storage. (3) A small retail, showroom or office building. Property has city sewer and water. Whether you're looking t...

PROPERTY FEATURES

OutsideFeatures	ParkingGarage	OtherRooms	InteriorFeatures
Truck Door	6 To 10 Spaces Paved	Retail Store	Storage
Heating	Cooling	Water	Sewer
Gas Natural	Central Air Conditioning	Well	City
Forced Air			

CONTACT



Ask for Theresa Maina
Berger Realty Inc
3160 Asbury Avenue, Ocean City
Call: 609-703-7725
Email to: tam@bergerrealty.com

Scan to see Property page.

