

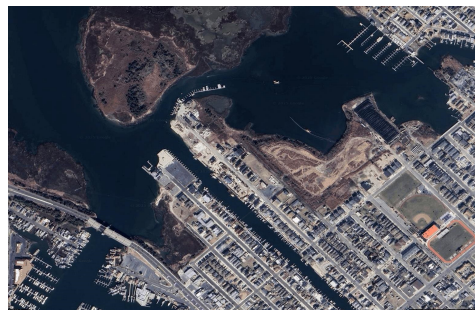


Berger Realty, Inc.
3160 Asbury Avenue
Ocean City, NJ 08226
1-877-237-4371 / 609-399-0076
info@bergerrealty.com



625 Montgomery, Wildwood, NJ, 08260

Price \$399,000.00



PROPERTY DETAILS

Total Rooms	
Bedrooms	0
Baths Full	0
Baths Half	0
Year Built	
Type	Vacant Lot
Block Number	100
Listing #	251012
Taxes	3988.00

COMMENTS

Wildwood Living Awaits with Water Views! – Build Your Dream Home! Welcome to your slice of paradise! This prime vacant lot offers an incredible opportunity to design and build the custom home you've always dreamed of – all just steps from the water. Located in a vibrant and rapidly growing community, this property features quick access to boating, kayaking, and a ful...

PROPERTY FEATURES

CONTACT



Ask for Tanya Pinkerton
Berger Realty Inc
3160 Asbury Avenue, Ocean City
Call: 609-442-0418
Email to: tp@bergerrealty.com

Scan to see Property page.

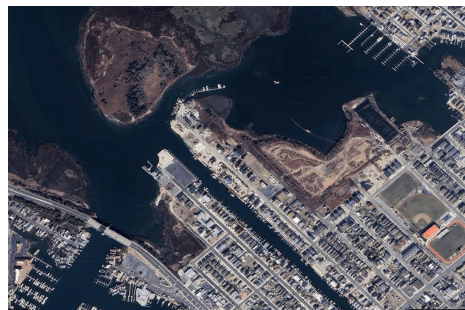


Berger Realty, Inc.
3160 Asbury Avenue
Ocean City, NJ 08226
1-877-237-4371 / 609-399-0076
info@bergerrealty.com



625 Montgomery, Wildwood, NJ, 08260

Price \$399,000.00



PROPERTY DETAILS

Total Rooms	
Bedrooms	0
Baths Full	0
Baths Half	0
Year Built	
Type	Vacant Lot
Block Number	100
Listing #	251012
Taxes	3988.00

COMMENTS

Wildwood Living Awaits with Water Views! – Build Your Dream Home! Welcome to your slice of paradise! This prime vacant lot offers an incredible opportunity to design and build the custom home you've always dreamed of – all just steps from the water. Located in a vibrant and rapidly growing community, this property features quick access to boating, kayaking, and a ful...

PROPERTY FEATURES

CONTACT



Ask for Tanya Pinkerton
Berger Realty Inc
3160 Asbury Avenue, Ocean City
Call: 609-442-0418
Email to: tp@bergerrealty.com

Scan to see Property page.

