

Berger Realty

Since 1926



Berger Realty, Inc
1330 Bay Avenue
Ocean City, NJ 08226
609-391-1330/609-391-1300
info@bergerrealty.com

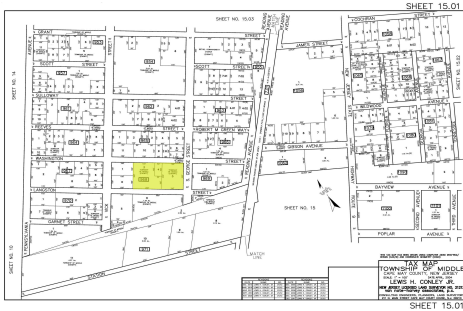


Langston, Whitesboro, NJ, 08252

Price \$150,000.00

PROPERTY DETAILS

| | |
|--------------|------------------------|
| Total Rooms | |
| Bedrooms | 0 |
| Baths Full | 0 |
| Baths Half | 0 |
| Year Built | |
| Type | Residential Vacant Lot |
| Block Number | 968 |
| Listing # | 250819 |
| Taxes | 384.00 |



COMMENTS

Prime opportunity to own 2 acres of wooded land in an up and coming residential area of Middle Township. The property consists of 3 separate lots, offering flexibility for development or a private retreat. Nestled in a peaceful, natural setting, yet conveniently located near local amenities, schools, and major routes. Ideal for builders, investors, or those seeking to build...

PROPERTY FEATURES

CONTACT

Ask for Donna M. Drohan
Berger Realty Inc
1330 Bay Avenue, Ocean City
Call:
Email to: dmd@bergerrealty.com

Scan to see Property page.



Berger Realty

Since 1926



Berger Realty, Inc
1330 Bay Avenue
Ocean City, NJ 08226
609-391-1330/609-391-1300
info@bergerrealty.com

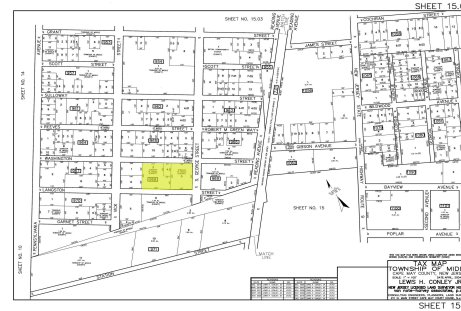


Langston, Whitesboro, NJ, 08252

Price \$150,000.00

PROPERTY DETAILS

| | |
|--------------|------------------------|
| Total Rooms | |
| Bedrooms | 0 |
| Baths Full | 0 |
| Baths Half | 0 |
| Year Built | |
| Type | Residential Vacant Lot |
| Block Number | 968 |
| Listing # | 250819 |
| Taxes | 384.00 |



COMMENTS

Prime opportunity to own 2 acres of wooded land in an up and coming residential area of Middle Township. The property consists of 3 separate lots, offering flexibility for development or a private retreat. Nestled in a peaceful, natural setting, yet conveniently located near local amenities, schools, and major routes. Ideal for builders, investors, or those seeking to build...

PROPERTY FEATURES

CONTACT

Ask for Donna M. Drohan
Berger Realty Inc
1330 Bay Avenue, Ocean City
Call:
Email to: dmd@bergerrealty.com

Scan to see Property page.

