



Berger Realty, Inc.
3160 Asbury Avenue
Ocean City, NJ 08226
1-877-237-4371 / 609-399-0076
info@bergerrealty.com



614 Route 9, lot 26, Cape May Court House, NJ, 08210

Price \$159,000.00



PROPERTY DETAILS

| | |
|--------------|----------------|
| Total Rooms | 7 |
| Bedrooms | 2 |
| Baths Full | 1 |
| Baths Half | 0 |
| Year Built | 1979 |
| Type | Age Restricted |
| Block Number | 16 |
| Listing # | 250702 |
| Taxes | |

COMMENTS

Two bedroom, One bathroom is located in the 55 Plus Adult Parkview Community. This unit has a spacious kitchen with plenty of cabinets and countertop space and boasts a two year old roof. Home is handicap accessible from the large interior sunroom door throughout. Outside there is a large patio and storage shed. This pet friendly park is centrally located in Cape May Court...

PROPERTY FEATURES

| | | | |
|---------------------------------------|--|---|--|
| Exterior Aluminum | OutsideFeatures Patio Storage Building | ParkingGarage 1 Car | OtherRooms Living Room Kitchen Pantry Florida Room Laundry Closet |
| InteriorFeatures Handicap Features | AppliancesIncluded Range Oven Microwave Oven Washer Dryer Dishwasher | AlsoIncluded Drapes Curtains Window Treatments | Heating Oil |
| Cooling Central Air Condition | HotWater Oil | Water City | Sewer City |

CONTACT



Ask for Sara Varani
Berger Realty Inc
3160 Asbury Avenue, Ocean City
Call:
Email to: sev@bergerrealty.com

Scan to see Property page.



Berger Realty, Inc.
3160 Asbury Avenue
Ocean City, NJ 08226
1-877-237-4371 / 609-399-0076
info@bergerrealty.com



614 Route 9, lot 26, Cape May Court House, NJ, 08210

Price \$159,000.00



PROPERTY DETAILS

| | |
|--------------|----------------|
| Total Rooms | 7 |
| Bedrooms | 2 |
| Baths Full | 1 |
| Baths Half | 0 |
| Year Built | 1979 |
| Type | Age Restricted |
| Block Number | 16 |
| Listing # | 250702 |
| Taxes | |

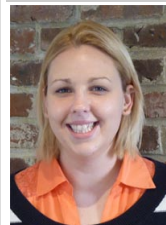
COMMENTS

Two bedroom, One bathroom is located in the 55 Plus Adult Parkview Community. This unit has a spacious kitchen with plenty of cabinets and countertop space and boasts a two year old roof. Home is handicap accessible from the large interior sunroom door throughout. Outside there is a large patio and storage shed. This pet friendly park is centrally located in Cape May Court...

PROPERTY FEATURES

| | | | |
|---------------------------------------|--|---|--|
| Exterior Aluminum | OutsideFeatures Patio Storage Building | ParkingGarage 1 Car | OtherRooms Living Room Kitchen Pantry Florida Room Laundry Closet |
| InteriorFeatures Handicap Features | AppliancesIncluded Range Oven Microwave Oven Washer Dryer Dishwasher | AlsoIncluded Drapes Curtains Window Treatments | Heating Oil |
| Cooling Central Air Condition | HotWater Oil | Water City | Sewer City |

CONTACT



Ask for Sara Varani
Berger Realty Inc
3160 Asbury Avenue, Ocean City
Call:
Email to: sev@bergerrealty.com

Scan to see Property page.

