



Berger Realty, Inc.
3160 Asbury Avenue
Ocean City, NJ 08226
1-877-237-4371 / 609-399-0076
info@bergerrealty.com



1522 Route 47, Woodbine, NJ, 08270

Price \$175,000.00



PROPERTY DETAILS

Total Rooms	0
Bedrooms	4
Baths Full	1
Baths Half	1
Year Built	1930
Type	Single Family
Block Number	52
Listing #	250692
Taxes	3761.00

COMMENTS

NEW SEPTIC JUST INSTALLED! Discover the potential of this fully gutted two-story home, originally built in 1930, nestled on a sprawling 5-acre lot. This unique property offers a blank canvas, ready for your vision to come to life. Whether you're dreaming of a modern farmhouse, a timeless classic, or a blend of both, this home provides the perfect starting point. Located i...

PROPERTY FEATURES

Heating	Cooling	HotWater	Water
No Heating	None	None	Well

Sewer
Other

CONTACT



Ask for Tara Cruser-Moss
Berger Realty Inc
3160 Asbury Avenue, Ocean City
Call: 609-317-5396
Email to: tcm@bergerrealty.com

Scan to see Property page.



Berger Realty, Inc.
3160 Asbury Avenue
Ocean City, NJ 08226
1-877-237-4371 / 609-399-0076
info@bergerrealty.com



1522 Route 47, Woodbine, NJ, 08270

Price \$175,000.00



PROPERTY DETAILS

Total Rooms	0
Bedrooms	4
Baths Full	1
Baths Half	1
Year Built	1930
Type	Single Family
Block Number	52
Listing #	250692
Taxes	3761.00

COMMENTS

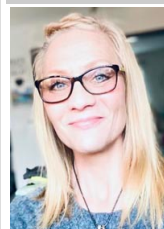
NEW SEPTIC JUST INSTALLED! Discover the potential of this fully gutted two-story home, originally built in 1930, nestled on a sprawling 5-acre lot. This unique property offers a blank canvas, ready for your vision to come to life. Whether you're dreaming of a modern farmhouse, a timeless classic, or a blend of both, this home provides the perfect starting point. Located i...

PROPERTY FEATURES

Heating	Cooling	HotWater	Water
No Heating	None	None	Well

Sewer
Other

CONTACT



Ask for Tara Cruser-Moss
Berger Realty Inc
3160 Asbury Avenue, Ocean City
Call: 609-317-5396
Email to: tcm@bergerrealty.com

Scan to see Property page.

