

# Berger Realty

Since 1926



Ocean 17  
1670 Boardwalk  
Ocean City, NJ 08226  
609-391-0500

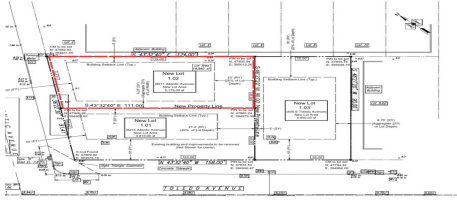
[oc17@BergerRealty.com](mailto:oc17@BergerRealty.com)



8211 Atlantic, 1.02, Wildwood Crest, NJ, 08260

Price \$1,360,000.00

## PROPERTY DETAILS



Total Rooms	
Bedrooms	0
Baths Full	0
Baths Half	0
Year Built	
Type	Residential Vacant Lot
Block Number	126
Listing #	250473
Taxes	9999999.00

## COMMENTS

*Unique opportunity on a popular beach block in Wildwood Crest! Currently the Ala Kai II Motel, this property can accommodate 3 single family homes each sitting on larger sized lots, pending a subdivision approval. Proposed lot size of this lot will be (lot 1.02) 45x111. This property can have water views, be a short stroll to the beach entrance, and room for a pool. Sale ...*

## PROPERTY FEATURES

## CONTACT



Ask for Laryn Crisci  
Berger Realty Inc  
1670 Boardwalk, Ocean City  
Call: 610-368-8416  
Email to: [lrc@bergerrealty.com](mailto:lrc@bergerrealty.com)

Scan to see Property page.



# Berger Realty

Since 1926



Ocean 17  
1670 Boardwalk  
Ocean City, NJ 08226  
609-391-0500

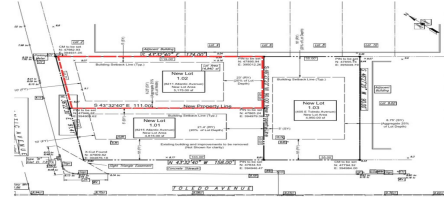
[oc17@BergerRealty.com](mailto:oc17@BergerRealty.com)



8211 Atlantic, 1.02, Wildwood Crest, NJ, 08260

Price \$1,360,000.00

## PROPERTY DETAILS



Total Rooms	
Bedrooms	0
Baths Full	0
Baths Half	0
Year Built	
Type	Residential Vacant Lot
Block Number	126
Listing #	250473
Taxes	9999999.00

## COMMENTS

*Unique opportunity on a popular beach block in Wildwood Crest! Currently the Ala Kai II Motel, this property can accommodate 3 single family homes each sitting on larger sized lots, pending a subdivision approval. Proposed lot size of this lot will be (lot 1.02) 45x111. This property can have water views, be a short stroll to the beach entrance, and room for a pool. Sale ...*

## PROPERTY FEATURES

## CONTACT



Ask for Laryn Crisci  
Berger Realty Inc  
1670 Boardwalk, Ocean City  
Call: 610-368-8416  
Email to: [lrc@bergerrealty.com](mailto:lrc@bergerrealty.com)

Scan to see Property page.

