

Berger Realty

Since 1926



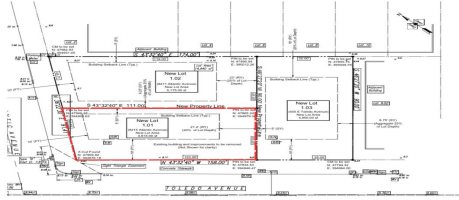
Berger Realty, Inc.
3160 Asbury Avenue
Ocean City, NJ 08226
1-877-237-4371 / 609-399-0076
info@bergerrealty.com



8215 Atlantic, 1.01, Wildwood Crest, NJ, 08260

Price \$1,490,000.00

PROPERTY DETAILS



Total Rooms	0
Bedrooms	0
Baths Full	0
Baths Half	0
Year Built	
Type	Residential Vacant Lot
Block Number	126
Listing #	250472
Taxes	9999999.00

COMMENTS

Unique opportunity on a popular beach block in Wildwood Crest! Currently the Ala Kai II Motel, this property can accommodate 3 single family homes each sitting on larger sized lots, pending a subdivision approval. Proposed lot size of this lot will be (lot 1.01) 45.7x103. This corner property will have water views, be a short stroll to the beach entrance, and room for a p...

PROPERTY FEATURES

CONTACT



Ask for Sara Varani
Berger Realty Inc
3160 Asbury Avenue, Ocean City
Call:
Email to: sev@bergerrealty.com

Scan to see Property page.



Berger Realty

Since 1926



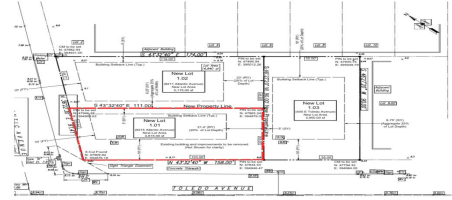
Berger Realty, Inc.
3160 Asbury Avenue
Ocean City, NJ 08226
1-877-237-4371 / 609-399-0076
info@bergerrealty.com



8215 Atlantic, 1.01, Wildwood Crest, NJ, 08260

Price \$1,490,000.00

PROPERTY DETAILS



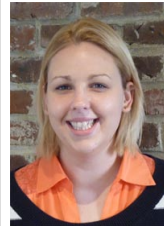
Total Rooms	0
Bedrooms	0
Baths Full	0
Baths Half	0
Year Built	
Type	Residential Vacant Lot
Block Number	126
Listing #	250472
Taxes	9999999.00

COMMENTS

Unique opportunity on a popular beach block in Wildwood Crest! Currently the Ala Kai II Motel, this property can accommodate 3 single family homes each sitting on larger sized lots, pending a subdivision approval. Proposed lot size of this lot will be (lot 1.01) 45.7x103. This corner property will have water views, be a short stroll to the beach entrance, and room for a p...

PROPERTY FEATURES

CONTACT



Ask for Sara Varani
Berger Realty Inc
3160 Asbury Avenue, Ocean City
Call:
Email to: sev@bergerrealty.com

Scan to see Property page.

