

# Berger Realty

Since 1926



Berger Realty, Inc  
1330 Bay Avenue  
Ocean City, NJ 08226  
609-391-1330/609-391-1300  
info@bergerrealty.com



0 South Egg Harbor, Winslow Township, NJ, 08037

Price \$135,000.00



## PROPERTY DETAILS

Total Rooms	
Bedrooms	0
Baths Full	0
Baths Half	0
Year Built	
Type	Residential Vacant Lot
Block Number	7303
Listing #	250448
Taxes	3103.00

## COMMENTS

14 + Acres located in Winslow Twp, Hammonton area in PR1 zoning in a Pinelands Rural Development Area. Rural Residential Zoning permitted uses allow single family on 3.2 acres lots (possible 4 lots) or 1 Acre cluster development , agriculture, forestry, roadside retail and service,. Sale is as is where is seller makes no representation to the feasibility of subdividing th...

## PROPERTY FEATURES

## CONTACT



Ask for Michael Wallitsch  
Berger Realty Inc  
1330 Bay Avenue, Ocean City  
Call: 609-350-9800  
Email to: [mow@bergerrealty.com](mailto:mow@bergerrealty.com)

Scan to see Property page.



# Berger Realty

Since 1926

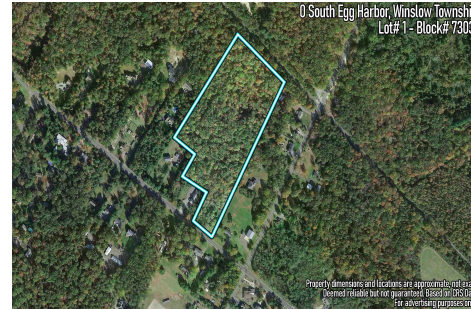


Berger Realty, Inc  
1330 Bay Avenue  
Ocean City, NJ 08226  
609-391-1330/609-391-1300  
info@bergerrealty.com



0 South Egg Harbor, Winslow Township, NJ, 08037

Price \$135,000.00



## PROPERTY DETAILS

Total Rooms	
Bedrooms	0
Baths Full	0
Baths Half	0
Year Built	
Type	Residential Vacant Lot
Block Number	7303
Listing #	250448
Taxes	3103.00

## COMMENTS

14 + Acres located in Winslow Twp, Hammonton area in PR1 zoning in a Pinelands Rural Development Area. Rural Residential Zoning permitted uses allow single family on 3.2 acres lots (possible 4 lots) or 1 Acre cluster development , agriculture, forestry, roadside retail and service,. Sale is as is where is seller makes no representation to the feasibility of subdividing th...

## PROPERTY FEATURES

## CONTACT



Ask for Michael Wallitsch  
Berger Realty Inc  
1330 Bay Avenue, Ocean City  
Call: 609-350-9800  
Email to: [mow@bergerrealty.com](mailto:mow@bergerrealty.com)

Scan to see Property page.

