

Berger Realty

Since 1926



Berger Realty, Inc.
3160 Asbury Avenue
Ocean City, NJ 08226
1-877-237-4371 / 609-399-0076
info@bergerrealty.com



206 Pacific, Cape May Court House, NJ, 08210

Price \$160,000.00

**VACANT
LAND**

PROPERTY DETAILS

Total Rooms	0
Bedrooms	0
Baths Full	0
Baths Half	0
Year Built	
Type	Residential Vacant Lot
Block Number	250
Listing #	250363
Taxes	1377.00

COMMENTS

Conveniently located to everything Cape May Court House has to offer! This beautiful wooded lot is just shy of 3/4 of an acre (.736) in size and within the sewer service area and (R) Residential Zone of Cape May Court House. Perfect to build a new home and enjoy close proximity to shopping, dining, recreation, and the beaches of Southern Cape May County. Buyer is respons...

PROPERTY FEATURES

CONTACT



Ask for Joyce McMahon
Berger Realty Inc
3160 Asbury Avenue, Ocean City
Call:
Email to: jmm@bergerrealty.com

Scan to see Property page.



Berger Realty

Since 1926



Berger Realty, Inc.
3160 Asbury Avenue
Ocean City, NJ 08226
1-877-237-4371 / 609-399-0076
info@bergerrealty.com



206 Pacific, Cape May Court House, NJ, 08210

Price \$160,000.00

**VACANT
LAND**

PROPERTY DETAILS

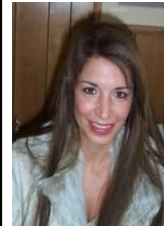
Total Rooms	0
Bedrooms	0
Baths Full	0
Baths Half	0
Year Built	
Type	Residential Vacant Lot
Block Number	250
Listing #	250363
Taxes	1377.00

COMMENTS

Conveniently located to everything Cape May Court House has to offer! This beautiful wooded lot is just shy of 3/4 of an acre (.736) in size and within the sewer service area and (R) Residential Zone of Cape May Court House. Perfect to build a new home and enjoy close proximity to shopping, dining, recreation, and the beaches of Southern Cape May County. Buyer is respons...

PROPERTY FEATURES

CONTACT



Ask for Joyce McMahon
Berger Realty Inc
3160 Asbury Avenue, Ocean City
Call:
Email to: jmm@bergerrealty.com

Scan to see Property page.

