



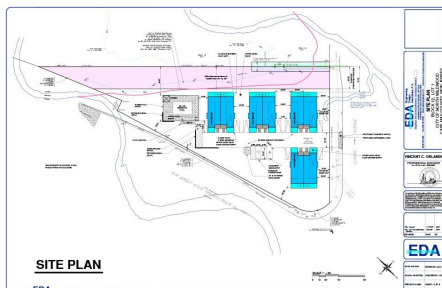
Berger Realty, Inc.  
3160 Asbury Avenue  
Ocean City, NJ 08226  
1-877-237-4371 / 609-399-0076  
info@bergerrealty.com



800 Spruce, North Wildwood, NJ, 08260

Price \$2,500,000.00

#### PROPERTY DETAILS



Total Rooms	0
Bedrooms	0
Baths Full	0
Baths Half	0
Year Built	
Type	Vacant Lot
Block Number	12
Listing #	243607
Taxes	12230.00

#### COMMENTS

Fully approved for 8 - 2400 +- sq. ft townhomes. Development is approved for large pool facility and plenty of parking. Water views from all angles and perfectly located in Anglesea with easy access to and from our island. See concept plan attached. Contact listing broker for all details...

#### PROPERTY FEATURES

#### CONTACT



Ask for Joyce McMahon  
Berger Realty Inc  
3160 Asbury Avenue, Ocean City  
Call:  
Email to: jmm@bergerrealty.com

Scan to see Property page.



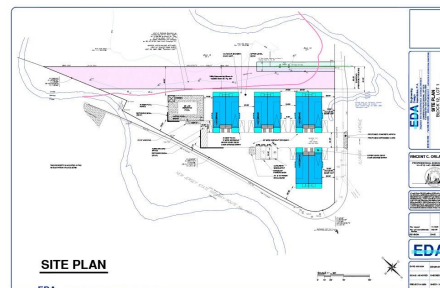
Berger Realty, Inc.  
3160 Asbury Avenue  
Ocean City, NJ 08226  
1-877-237-4371 / 609-399-0076  
info@bergerrealty.com



800 Spruce, North Wildwood, NJ, 08260

Price \$2,500,000.00

#### PROPERTY DETAILS



Total Rooms	0
Bedrooms	0
Baths Full	0
Baths Half	0
Year Built	
Type	Vacant Lot
Block Number	12
Listing #	243607
Taxes	12230.00

#### COMMENTS

Fully approved for 8 - 2400 +- sq. ft townhomes. Development is approved for large pool facility and plenty of parking. Water views from all angles and perfectly located in Anglesea with easy access to and from our island. See concept plan attached. Contact listing broker for all details...

#### PROPERTY FEATURES

#### CONTACT



Ask for Joyce McMahon  
Berger Realty Inc  
3160 Asbury Avenue, Ocean City  
Call:  
Email to: jmm@bergerrealty.com

Scan to see Property page.

