

Berger Realty

Since 1926

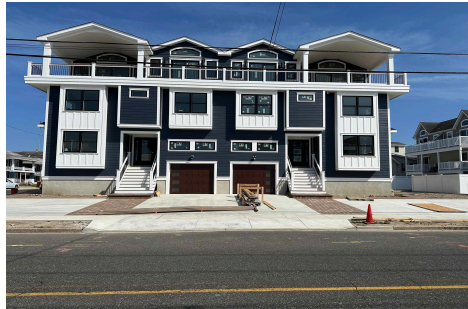


Berger Realty, Inc.
3160 Asbury Avenue
Ocean City, NJ 08226
1-877-237-4371 / 609-399-0076
info@bergerrealty.com



4301 Central, Sea Isle City, NJ, 08243

Price \$2,199,000.00



PROPERTY DETAILS

Total Rooms	10
Bedrooms	5
Baths Full	4
Baths Half	1
Year Built	2024
Type	Townhouse
Block Number	4301
Listing #	243427
Taxes	

COMMENTS

Get in for Summer 2025! Welcome to this fantastic new construction on 43rd street at the corner of 43rd and Central (North Unit). The interior of this home has it all! This house has a unique kitchen layout, with open shelving, and a full length wet bar in the family room. Enjoy the kitchen and family room on the top floor with dramatic, high ceiling and tons of na...

PROPERTY FEATURES

Heating	Cooling	HotWater	Water
Gas Natural	Central Air	Electric	Public
Forced Air			
Sewer			
Public			

CONTACT



Ask for Michael Devlin
Berger Realty Inc
3160 Asbury Avenue, Ocean City
Call: 609-306-3730
Email to: msd@bergerrealty.com

Scan to see Property page.



Berger Realty

Since 1926



Berger Realty, Inc.
3160 Asbury Avenue
Ocean City, NJ 08226
1-877-237-4371 / 609-399-0076
info@bergerrealty.com



4301 Central, Sea Isle City, NJ, 08243

Price \$2,199,000.00



PROPERTY DETAILS

Total Rooms	10
Bedrooms	5
Baths Full	4
Baths Half	1
Year Built	2024
Type	Townhouse
Block Number	4301
Listing #	243427
Taxes	

COMMENTS

Get in for Summer 2025! Welcome to this fantastic new construction on 43rd street at the corner of 43rd and Central (North Unit). The interior of this home has it all! This house has a unique kitchen layout, with open shelving, and a full length wet bar in the family room. Enjoy the kitchen and family room on the top floor with dramatic, high ceiling and tons of na...

PROPERTY FEATURES

Heating	Cooling	HotWater	Water
Gas Natural	Central Air	Electric	Public
Forced Air			
Sewer			
Public			

CONTACT



Ask for Michael Devlin
Berger Realty Inc
3160 Asbury Avenue, Ocean City
Call: 609-306-3730
Email to: msd@bergerrealty.com

Scan to see Property page.

