



Berger Realty, Inc.  
3160 Asbury Avenue  
Ocean City, NJ 08226  
1-877-237-4371 / 609-399-0076  
info@bergerrealty.com



1 Roosevelt, Marmora, NJ, 08223

Price \$224,900.00



#### PROPERTY DETAILS

Total Rooms	
Bedrooms	0
Baths Full	0
Baths Half	0
Year Built	
Type	Commercial Vacant Lot
Block Number	730
Listing #	242942
Taxes	266.00

#### COMMENTS

*Prime location with this 180 X 90 corner lot located only a few miles from Ocean City beaches on one of the county's busiest intersections. Prospective buyer should contact local zoning office for building options....*

#### PROPERTY FEATURES

#### CONTACT



Ask for Sara Varani  
Berger Realty Inc  
3160 Asbury Avenue, Ocean City  
Call:  
Email to: sev@bergerrealty.com

Scan to see Property page.



Berger Realty, Inc.  
3160 Asbury Avenue  
Ocean City, NJ 08226  
1-877-237-4371 / 609-399-0076  
info@bergerrealty.com



1 Roosevelt, Marmora, NJ, 08223

Price \$224,900.00



#### PROPERTY DETAILS

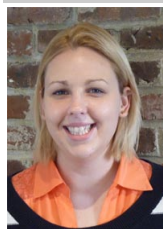
Total Rooms	
Bedrooms	0
Baths Full	0
Baths Half	0
Year Built	
Type	Commercial Vacant Lot
Block Number	730
Listing #	242942
Taxes	266.00

#### COMMENTS

*Prime location with this 180 X 90 corner lot located only a few miles from Ocean City beaches on one of the county's busiest intersections. Prospective buyer should contact local zoning office for building options....*

#### PROPERTY FEATURES

#### CONTACT



Ask for Sara Varani  
Berger Realty Inc  
3160 Asbury Avenue, Ocean City  
Call:  
Email to: sev@bergerrealty.com

Scan to see Property page.

