



Berger Realty, Inc.
3160 Asbury Avenue
Ocean City, NJ 08226
1-877-237-4371 / 609-399-0076
info@bergerrealty.com



1 Roosevelt, Marmora, NJ, 08223

Price \$224,900.00



PROPERTY DETAILS

Total Rooms	
Bedrooms	0
Baths Full	0
Baths Half	0
Year Built	
Type	Commercial Vacant Lot
Block Number	730
Listing #	242942
Taxes	266.00

COMMENTS

Prime location with this 180 X 90 corner lot located only a few miles from Ocean City beaches on one of the county's busiest intersections. Prospective buyer should contact local zoning office for building options....

PROPERTY FEATURES

CONTACT



Ask for Margarita Kobilianets
Berger Realty Inc
3160 Asbury Avenue, Ocean City
Call: 609-674-3417
Email to: mak@bergerrealty.com

Scan to see Property page.

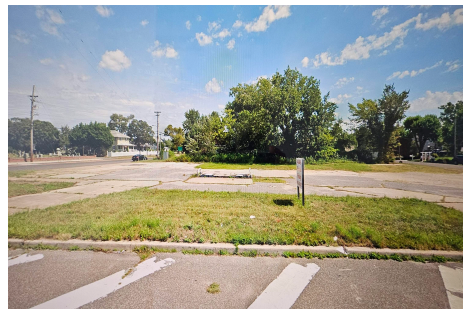


Berger Realty, Inc.
3160 Asbury Avenue
Ocean City, NJ 08226
1-877-237-4371 / 609-399-0076
info@bergerrealty.com



1 Roosevelt, Marmora, NJ, 08223

Price \$224,900.00



PROPERTY DETAILS

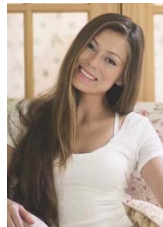
Total Rooms	
Bedrooms	0
Baths Full	0
Baths Half	0
Year Built	
Type	Commercial Vacant Lot
Block Number	730
Listing #	242942
Taxes	266.00

COMMENTS

Prime location with this 180 X 90 corner lot located only a few miles from Ocean City beaches on one of the county's busiest intersections. Prospective buyer should contact local zoning office for building options....

PROPERTY FEATURES

CONTACT



Ask for Margarita Kobilianets
Berger Realty Inc
3160 Asbury Avenue, Ocean City
Call: 609-674-3417
Email to: mak@bergerrealty.com

Scan to see Property page.

