

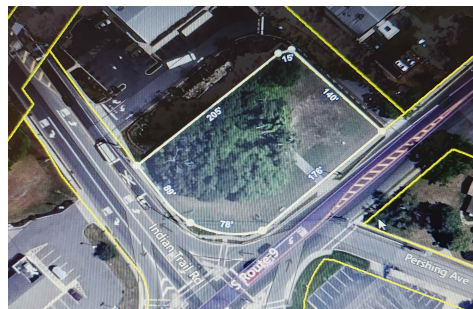


Berger Realty, Inc.
3160 Asbury Avenue
Ocean City, NJ 08226
1-877-237-4371 / 609-399-0076
info@bergerrealty.com



1263 Route 9 S, Cape May Court House, NJ, 08210

Price \$250,000.00



PROPERTY DETAILS

Total Rooms	0
Bedrooms	0
Baths Full	0
Baths Half	0
Year Built	
Type	Commercial Vacant Lot
Block Number	355.02
Listing #	242940
Taxes	6815.00

COMMENTS

Prime location with this 0.72-acre Commercial Lot located on Route 9. The new Grapevine Plaza development across the street on Rt. 9. Home Depot is just around the corner in this thriving business sector. Flexible Town Business Zone allows for a variety of business opportunities including Retail, Restaurants, Professional Offices, Mixed-Use, Health Care etc. Priced to sell...

PROPERTY FEATURES

CONTACT



Ask for Lureen "Lani" Calcara
Berger Realty Inc
3160 Asbury Avenue, Ocean City
Call: 609-705-7342
Email to: luc@bergerrealty.com

Scan to see Property page.

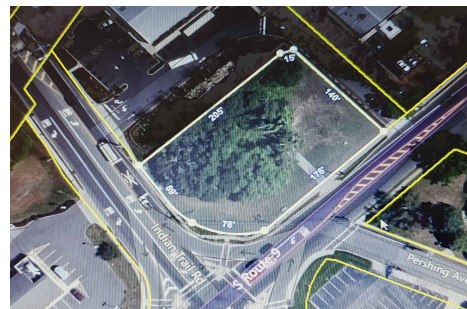


Berger Realty, Inc.
3160 Asbury Avenue
Ocean City, NJ 08226
1-877-237-4371 / 609-399-0076
info@bergerrealty.com



1263 Route 9 S, Cape May Court House, NJ, 08210

Price \$250,000.00



PROPERTY DETAILS

Total Rooms	0
Bedrooms	0
Baths Full	0
Baths Half	0
Year Built	
Type	Commercial Vacant Lot
Block Number	355.02
Listing #	242940
Taxes	6815.00

COMMENTS

Prime location with this 0.72-acre Commercial Lot located on Route 9. The new Grapevine Plaza development across the street on Rt. 9. Home Depot is just around the corner in this thriving business sector. Flexible Town Business Zone allows for a variety of business opportunities including Retail, Restaurants, Professional Offices, Mixed-Use, Health Care etc. Priced to sell...

PROPERTY FEATURES

CONTACT



Ask for Lureen "Lani" Calcara
Berger Realty Inc
3160 Asbury Avenue, Ocean City
Call: 609-705-7342
Email to: luc@bergerrealty.com

Scan to see Property page.

