

Berger Realty

Since 1926



Berger Realty, Inc.
3160 Asbury Avenue
Ocean City, NJ 08226
1-877-237-4371 / 609-399-0076
info@bergerrealty.com



621 Route 9 S, Cape May Court House, NJ, 08210

Price \$549,000.00



PROPERTY DETAILS

Total Rooms	
Bedrooms	0
Baths Full	
Baths Half	
Year Built	
Type	Commercial/Industrial
Block Number	326
Listing #	242730
Taxes	3840.00

COMMENTS

Exceptional Opportunity with this Acre parcel located in close proximity to booming downtown Cape May Court House. Positioned on a high-volume street in the Town Business Zone, this property has tremendous potential for an Investor or Business Owner! Potential uses, but not limited to, are as follows; retail, service uses, professional offices, banks, offices, health care ...

PROPERTY FEATURES

Exterior	Heating	Cooling	HotWater
Wood/Frame	Forced Air	Other (See Remarks)	Gas
Other (See Remarks)			
Water	Sewer		
City	City		

CONTACT



Ask for Mary Kuchka
Berger Realty Inc
3160 Asbury Avenue, Ocean City
Call: 609-576-2790
Email to: mk@bergerrealty.com

Scan to see Property page.



Berger Realty

Since 1926

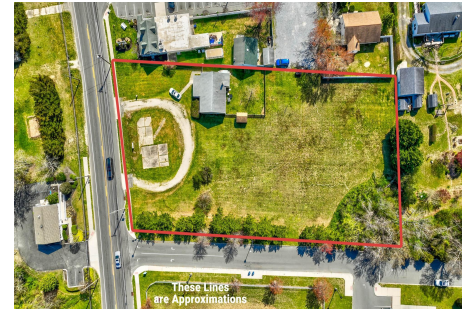


Berger Realty, Inc.
3160 Asbury Avenue
Ocean City, NJ 08226
1-877-237-4371 / 609-399-0076
info@bergerrealty.com



621 Route 9 S, Cape May Court House, NJ, 08210

Price \$549,000.00



PROPERTY DETAILS

Total Rooms	
Bedrooms	0
Baths Full	
Baths Half	
Year Built	
Type	Commercial/Industrial
Block Number	326
Listing #	242730
Taxes	3840.00

COMMENTS

Exceptional Opportunity with this Acre parcel located in close proximity to booming downtown Cape May Court House. Positioned on a high-volume street in the Town Business Zone, this property has tremendous potential for an Investor or Business Owner! Potential uses, but not limited to, are as follows; retail, service uses, professional offices, banks, offices, health care ...

PROPERTY FEATURES

Exterior	Heating	Cooling	HotWater
Wood/Frame	Forced Air	Other (See Remarks)	Gas
Other (See Remarks)			
Water	Sewer		
City	City		

CONTACT



Ask for Mary Kuchka
Berger Realty Inc
3160 Asbury Avenue, Ocean City
Call: 609-576-2790
Email to: mk@bergerrealty.com

Scan to see Property page.

