

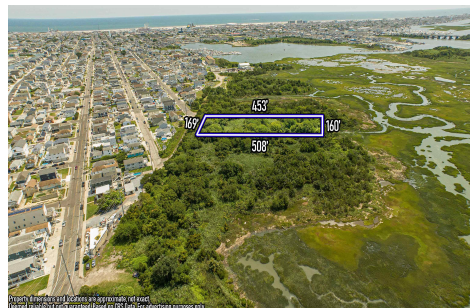


Berger Realty, Inc.  
3160 Asbury Avenue  
Ocean City, NJ 08226  
1-877-237-4371 / 609-399-0076  
info@bergerrealty.com



200 Evergreen, West Wildwood, NJ, 08260

Price \$1,500,000.00



#### PROPERTY DETAILS

Total Rooms	
Bedrooms	0
Baths Full	0
Baths Half	0
Year Built	
Type	Vacant Lot
Block Number	155
Listing #	242310
Taxes	1203.00

#### COMMENTS

*Are you a Dream Maker? A Catalyst for Change? A Pioneer of Vision? An exceptional growth opportunity awaits! Approximately 1.77 Acres, designated under Marine Commercial zoning, offering a wide range of possibilities, including single-family homes, motels, hotels, retail outlets, restaurants, and more. This location is celebrated for its awe-inspiring sunsets and picturesq...*

#### PROPERTY FEATURES

#### CONTACT



Ask for Thomas Byrne  
Berger Realty Inc  
3160 Asbury Avenue, Ocean City  
Call: 215-327-9152  
Email to: tfb@bergerrealty.com

Scan to see Property page.

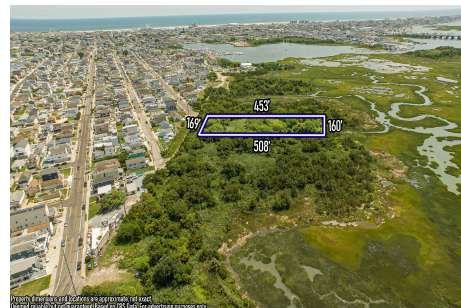


Berger Realty, Inc.  
3160 Asbury Avenue  
Ocean City, NJ 08226  
1-877-237-4371 / 609-399-0076  
info@bergerrealty.com



200 Evergreen, West Wildwood, NJ, 08260

Price \$1,500,000.00



#### PROPERTY DETAILS

Total Rooms	
Bedrooms	0
Baths Full	0
Baths Half	0
Year Built	
Type	Vacant Lot
Block Number	155
Listing #	242310
Taxes	1203.00

#### COMMENTS

*Are you a Dream Maker? A Catalyst for Change? A Pioneer of Vision? An exceptional growth opportunity awaits! Approximately 1.77 Acres, designated under Marine Commercial zoning, offering a wide range of possibilities, including single-family homes, motels, hotels, retail outlets, restaurants, and more. This location is celebrated for its awe-inspiring sunsets and picturesq...*

#### PROPERTY FEATURES

#### CONTACT



Ask for Thomas Byrne  
Berger Realty Inc  
3160 Asbury Avenue, Ocean City  
Call: 215-327-9152  
Email to: tfb@bergerrealty.com

Scan to see Property page.

