

# Berger Realty

Since 1928

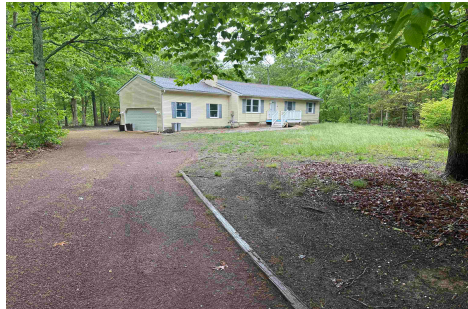


Berger Realty, Inc.  
3160 Asbury Avenue  
Ocean City, NJ 08226  
1-877-237-4371 / 609-399-0076  
info@bergerrealty.com



250 Ravenwood, Cape May Court House, NJ, 08210

Price \$649,900.00



### PROPERTY DETAILS

Total Rooms	10
Bedrooms	3
Baths Full	2
Baths Half	0
Year Built	0
Type	Single Family
Block Number	256.01
Listing #	241406
Taxes	4677.00

### COMMENTS

Located in the sought-after Ravenwood neighborhood, just minutes away from Ocean City, Sea Isle, and the Parkway Entrance, this charming rancher offers three bedrooms, two baths, a full basement, and sits on a generous 1.62-acre lot. Recently remodeled, this single-family home is move-in ready and waiting for you to make it your own. With a spacious lot, the possibilities ...

### PROPERTY FEATURES

Exterior Vinyl	OutsideFeatures Deck Porch	ParkingGarage Garage 2 Car Attached Stone Driveway 4 car parking	OtherRooms Living Room Dining Room Kitchen Den/TV Room Recreation/Family Eat-In-Kitchen Dining Area Laundry/Utility Room
InteriorFeatures Cathedral Ceilings Smoke/Fire Alarm Storage Tile Flooring Vinyl Flooring Kitchen Island	AppliancesIncluded Self-Clean Oven Refrigerator Washer Dryer Dishwasher Disposal Smoke/Fire Detector Stove Natural Gas	Basement Full Partial Outside Entrance Inside Entrance	Heating Gas Natural Forced Air
Cooling Central Air Condition Gas	HotWater Gas- Natural	Water Private	Sewer Private

### CONTACT

Ask for Frank Shoemaker  
Berger Realty Inc  
3160 Asbury Avenue, Ocean City  
Call:

Scan to see Property page.

# Berger Realty

Since 1928



Berger Realty, Inc.  
3160 Asbury Avenue  
Ocean City, NJ 08226  
1-877-237-4371 / 609-399-0076  
info@bergerrealty.com



250 Ravenwood, Cape May Court House, NJ, 08210

Price \$649,900.00



### PROPERTY DETAILS

Total Rooms	10
Bedrooms	3
Baths Full	2
Baths Half	0
Year Built	0
Type	Single Family
Block Number	256.01
Listing #	241406
Taxes	4677.00

### COMMENTS

Located in the sought-after Ravenwood neighborhood, just minutes away from Ocean City, Sea Isle, and the Parkway Entrance, this charming rancher offers three bedrooms, two baths, a full basement, and sits on a generous 1.62-acre lot. Recently remodeled, this single-family home is move-in ready and waiting for you to make it your own. With a spacious lot, the possibilities ...

### PROPERTY FEATURES

Exterior Vinyl	OutsideFeatures Deck Porch	ParkingGarage Garage 2 Car Attached Stone Driveway 4 car parking	OtherRooms Living Room Dining Room Kitchen Den/TV Room Recreation/Family Eat-In-Kitchen Dining Area Laundry/Utility Room
InteriorFeatures Cathedral Ceilings Smoke/Fire Alarm Storage Tile Flooring Vinyl Flooring Kitchen Island	AppliancesIncluded Self-Clean Oven Refrigerator Washer Dryer Dishwasher Disposal Smoke/Fire Detector Stove Natural Gas	Basement Full Partial Outside Entrance Inside Entrance	Heating Gas Natural Forced Air
Cooling Central Air Condition Gas	HotWater Gas- Natural	Water Private	Sewer Private

### CONTACT

Ask for Frank Shoemaker  
Berger Realty Inc  
3160 Asbury Avenue, Ocean City  
Call:

Scan to see Property page.



Email to: [fcs@bergerrealty.com](mailto:fcs@bergerrealty.com)



Email to: [fcs@bergerrealty.com](mailto:fcs@bergerrealty.com)

