



Berger Realty, Inc.  
3160 Asbury Avenue  
Ocean City, NJ 08226  
1-877-237-4371 / 609-399-0076  
info@bergerrealty.com



445 Dias Creek, Cape May Court House, NJ, 08210

Price \$189,000.00

#### PROPERTY DETAILS



Total Rooms	0
Bedrooms	0
Baths Full	0
Baths Half	0
Year Built	
Type	Residential Vacant Lot
Block Number	166
Listing #	241293
Taxes	

#### COMMENTS

Newly subdivided one-acre single family lot with 195' frontage on Dias Creek Road. Close to the center of town. Enjoy all that Cape May Court House has to offer. Restaurants, shopping and the bike path that runs all through the county including to the Cape May County Zoo and Park. Great location to custom build the home of your dreams....

#### PROPERTY FEATURES

#### CONTACT



Ask for Tom Melchionni  
Berger Realty Inc  
3160 Asbury Avenue, Ocean City  
Call: 609-602-8208  
Email to: tom@bergerrealty.com

Scan to see Property page.



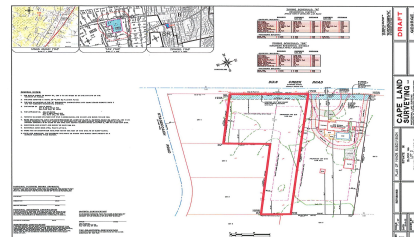
Berger Realty, Inc.  
3160 Asbury Avenue  
Ocean City, NJ 08226  
1-877-237-4371 / 609-399-0076  
info@bergerrealty.com



445 Dias Creek, Cape May Court House, NJ, 08210

Price \$189,000.00

#### PROPERTY DETAILS



Total Rooms	0
Bedrooms	0
Baths Full	0
Baths Half	0
Year Built	
Type	Residential Vacant Lot
Block Number	166
Listing #	241293
Taxes	

#### COMMENTS

Newly subdivided one-acre single family lot with 195' frontage on Dias Creek Road. Close to the center of town. Enjoy all that Cape May Court House has to offer. Restaurants, shopping and the bike path that runs all through the county including to the Cape May County Zoo and Park. Great location to custom build the home of your dreams....

#### PROPERTY FEATURES

#### CONTACT



Ask for Tom Melchionni  
Berger Realty Inc  
3160 Asbury Avenue, Ocean City  
Call: 609-602-8208  
Email to: tom@bergerrealty.com

Scan to see Property page.

