

# Berger Realty

Since 1928



Berger Realty, Inc.  
3160 Asbury Avenue  
Ocean City, NJ 08226  
1-877-237-4371 / 609-399-0076  
info@bergerrealty.com



308 Atlantic, West Cape May, NJ, 08204

Price \$515,000.00



### PROPERTY DETAILS

Total Rooms	
Bedrooms	0
Baths Full	0
Baths Half	0
Year Built	
Type	Residential Vacant Lot
Block Number	40
Listing #	241231
Taxes	2288.00

### COMMENTS

*Build your dream beach cottage on this parcel located in West Cape May. Less than one mile to the Cape May Beaches, nature areas, walking paths, Willow Creek Winery, Real's and Beach Plum Farms. Buyer is responsible for all permits and approvals....*

### PROPERTY FEATURES

### CONTACT



Ask for Marki Lyn Warlow  
Berger Realty Inc  
3160 Asbury Avenue, Ocean City  
Call:  
Email to: mlw@bergerrealty.com

Scan to see Property page.



# Berger Realty

Since 1928



Berger Realty, Inc.  
3160 Asbury Avenue  
Ocean City, NJ 08226  
1-877-237-4371 / 609-399-0076  
info@bergerrealty.com



308 Atlantic, West Cape May, NJ, 08204

Price \$515,000.00



### PROPERTY DETAILS

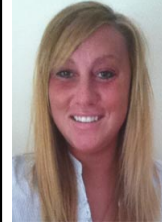
Total Rooms	
Bedrooms	0
Baths Full	0
Baths Half	0
Year Built	
Type	Residential Vacant Lot
Block Number	40
Listing #	241231
Taxes	2288.00

### COMMENTS

*Build your dream beach cottage on this parcel located in West Cape May. Less than one mile to the Cape May Beaches, nature areas, walking paths, Willow Creek Winery, Real's and Beach Plum Farms. Buyer is responsible for all permits and approvals....*

### PROPERTY FEATURES

### CONTACT



Ask for Marki Lyn Warlow  
Berger Realty Inc  
3160 Asbury Avenue, Ocean City  
Call:  
Email to: mlw@bergerrealty.com

Scan to see Property page.

