

Berger Realty

Since 1926



Berger Realty, Inc.
3160 Asbury Avenue
Ocean City, NJ 08226
1-877-237-4371 / 609-399-0076
info@bergerrealty.com

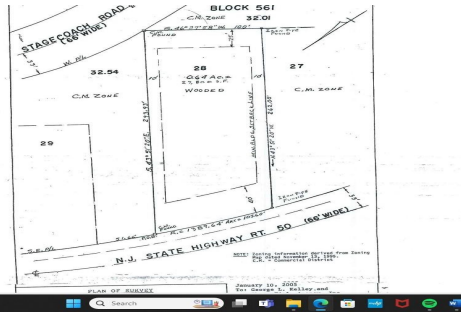


57 Route 50, Seaville, NJ, 08230

Price \$299,000.00

PROPERTY DETAILS

Total Rooms	0
Bedrooms	0
Baths Full	
Baths Half	
Year Built	
Type	Commercial/Industrial
Block Number	561
Listing #	241221
Taxes	1772.00



COMMENTS

Location, Location, Location!! On the Highly traveled Rt 50 this high visibility lot location is close to access of Garden State Parkway and Rt. 9. Zoned TC- Town Commercial opens the door to multiple uses adding to the property's flexibility and desirability. Proposed Architectural layout on file. Well and septic permits previously granted and on file with township. Ju...

PROPERTY FEATURES

Heating	Cooling	Water	Sewer
Electric	Other (See Remarks)	Other	Septic

CONTACT



Ask for Tanya Pinkerton
Berger Realty Inc
3160 Asbury Avenue, Ocean City
Call: 609-442-0418
Email to: tp@bergerrealty.com

Scan to see Property page.



Berger Realty

Since 1926



Berger Realty, Inc.
3160 Asbury Avenue
Ocean City, NJ 08226
1-877-237-4371 / 609-399-0076
info@bergerrealty.com

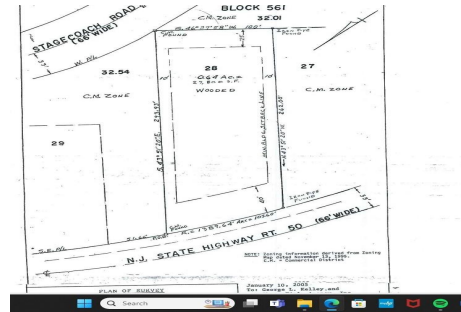


57 Route 50, Seaville, NJ, 08230

Price \$299,000.00

PROPERTY DETAILS

Total Rooms	0
Bedrooms	0
Baths Full	
Baths Half	
Year Built	
Type	Commercial/Industrial
Block Number	561
Listing #	241221
Taxes	1772.00



COMMENTS

Location, Location, Location!! On the Highly traveled Rt 50 this high visibility lot location is close to access of Garden State Parkway and Rt. 9. Zoned TC- Town Commercial opens the door to multiple uses adding to the property's flexibility and desirability. Proposed Architectural layout on file. Well and septic permits previously granted and on file with township. Ju...

PROPERTY FEATURES

Heating	Cooling	Water	Sewer
Electric	Other (See Remarks)	Other	Septic

CONTACT



Ask for Tanya Pinkerton
Berger Realty Inc
3160 Asbury Avenue, Ocean City
Call: 609-442-0418
Email to: tp@bergerrealty.com

Scan to see Property page.

